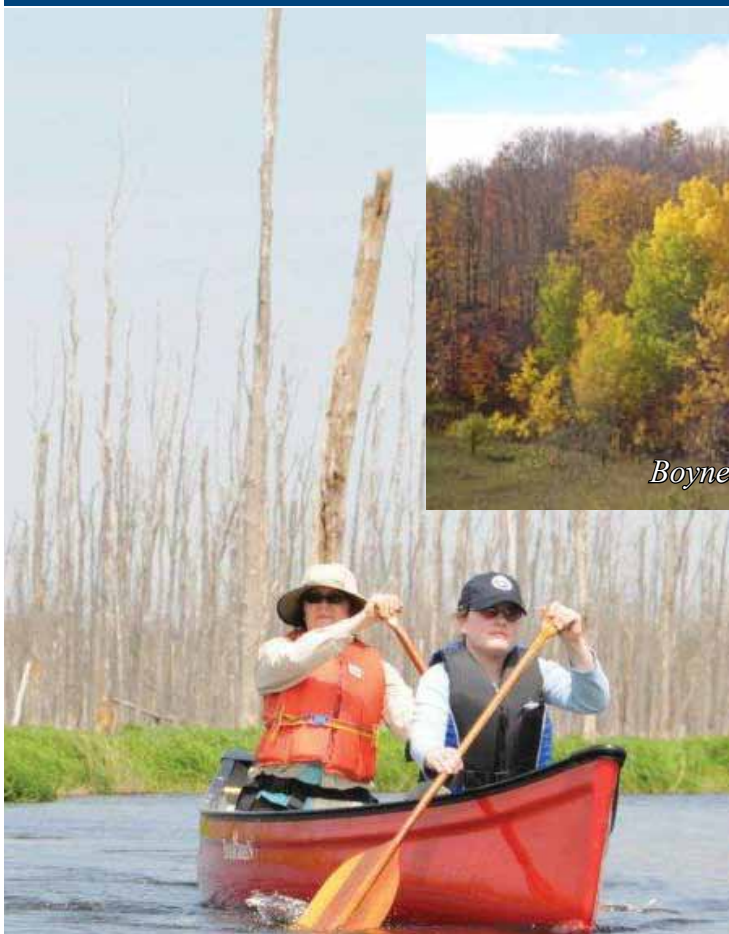




Conservation Areas in the Nottawasaga Valley watersheds



Boyne Springs



Canoeing in the Minesing Wetland



Winter fun at Tiffin

Step
Into Nature

www.nvca.on.ca

705-424-1479

Table of contents

3	About conservation areas
4	Tiffin Centre
5	Minesing Wetlands
6	Historic Fort Willow
7	Nottawasaga Bluffs
8	Petun
8	Glencairn
9	Osprey Wetlands
9	Land management
10	Edenvale
10	New Lowell
11	Tottenham
11	Utopia
12/13	Map of NVCA watershed
14/15	Map of Nottawasaga River canoe route

Photo credits

Front cover (fall colours): Richard Kitchen

Page 11 (Utopia): Friends of the Utopia Gristmill & Park

All other photos: NVCA

Historic Fort Willow

Help prevent the spread of Invasive Species!

An invasive species is a plant or animal that has been introduced to an area outside of its normal geographic range, and threatens the health of our natural areas by outcompeting native species for food and habitat (ex. garlic mustard). To help control invasive species, please remember to do the following:

- Clean your boots and/or bike before going to a new location
- Remove seeds and mud from your pets
- Buy firewood locally
- Dispose of baitfish at least 30m from the water's edge, and dispose of worms in the trash
- Inspect and clean your boat and motor before moving to a new waterbody.



Conserving our healthy waters

What is the Nottawasaga Valley Conservation Authority (NVCA)?

The NVCA is your public agency dedicated to the preservation of a healthy and safe environment. As your partner, the NVCA provides the expertise to help protect our water, our land, our future. Our programs include:

- Land management
- Environmental education
- Tree planting and forest management
- Healthy waters stewardship
- Watershed and environmental planning
- Flood forecasting and warning
- Watershed monitoring

What are conservation areas?

The NVCA owns 12 conservation areas (almost 12,000 acres) that provide opportunities for visitors to explore, learn about and appreciate the value of their natural environment. Our watershed is made up of a diverse assembly of landscapes which provides a variety of recreational opportunities at our conservation areas.

Conservation Area Safety & Regulations

- Please be aware that due to the “wilderness nature” of our lands, they are classified as Natural Hazard Areas and that you use them at your own risk.
- Alcoholic beverages and ATV’s are not permitted
- Please use receptacles provided or take your garbage with you.
- The NVCA **permits hunting in the Minesing and Osprey Wetlands** to NVCA-issued hunting pass holders. During hunting seasons please take extra caution and wear bright orange.

Fees

There is a daily entry fee of \$2 per person to visit all NVCA Conservation Areas. Fee stations are located at most entrances. Annual passes, valid for the calendar year, are available to purchase. Please visit www.nvca.on.ca or call 705-424-1479 for a form.

Special events

For information on special events at our conservation areas, visit www.nvca.on.ca or sign up for e-news by sending your email address to events@nvca.on.ca.

Tiffin Centre



Admission Fee



Cross Country Skiing



Cycling



Education/Interpretive



Facilities Rental



Fishing



Group Camping



Handicapped Access



Hiking



Picnic Facilities



Snowshoeing



The Tiffin Centre is a four season destination for environmental recreation and education. Hike, bike, ski or snowshoe on 17 kilometres of wheelchair accessible, looped trails that meander through a mixture of wetlands, forests, open meadows and ancient lake beds.

The 500-acre site is home to the Tiffin Outdoor Education Program and the annual Spring Tonic Maple Syrup Festival and Family Day Fun activities.

Facility rentals available (group camping, pavilion, auditorium/banquet hall).



ADDRESS: 8195 8th Line, Utopia, Essa Township
GPS COORDINATES: X-595757.4572, Y-4907785.454
DIRECTIONS: From Cty.Rd. 90, turn south onto the 8th Line of Essa Twp. and travel 4 km to entrance on left. From Hwy 89, turn north onto the 8th Line and travel to 8195.

Minesing Wetlands



Admission Fee

Witness a unique assemblage of fens, marshes and swamps which support a network of sensitive flora and fauna, some of which are rare or endangered. This wetland of International Significance spans more than 15,000 acres and provides a variety of recreational adventures.



Canoeing

CANOEING

Launch your canoe for a daytrip on the Willow Creek. Spot some of the many waterfowl species that call the area home as you make your way to the Nottawasaga River.



Cross Country Skiing

GPS COORDINATES: X-593661.9216, Y-4919396.961



Fishing

DIRECTIONS: Located on the west side of George Johnson Road, between Cty.Rd.90 and Hwy 26, in Springwater Twp.



Hiking

HIKING

Explore the wetland on foot, ski or snowshoe via the Ganaraska, Trans Canada Rail or McKinnon trails. Please note that the McKinnon trail is an unmaintained road allowance.



Hunting



Picnic Facilities

GPS COORDINATES: (McKinnon) X-588745.3709, Y-4912767.919



Snowshoeing

DIRECTIONS: The Ganaraska and Trans Canada Rail trails can be accessed at Historic Fort Willow. The McKinnon trailhead is at the end of McKinnon Road off of Cty.Rd.90 on



the east side of Angus.



WATERFOWL VIEWING WINDOW

At 12 ft. high, this tower gives one a bird's eye view of this area which experiences flooding in the spring, attracting a myriad of waterfowl.

GPS COORDINATES: X-588193.5877, Y-4911990.285

DIRECTIONS:

From Cty.Rd.90 take County Road 10 (Brentwood Road) west, turn right onto Concession 2 Sunnidale, Clearview Twp. Follow until you see the tower on left.

Historic Fort Willow



Admission Fee



Cycling



Heritage/Museum



Hiking



Picnic Facilities



Snowshoeing



Take a journey back in time to the 19th century at this recreated fort that served as a supply depot during the War of 1812. Palisade walls, building markings and interpretive signage show visitors where soldiers from the Royal Newfoundland Regiment lived while they prepared for battle on Georgian Bay. This is also the point from which the soldiers launched 29 wooden boats filled with supplies before rowing to Michilimackinac, near modern day Sault Ste. Marie.



Fort Willow is located on a former transportation route between Lake Simcoe and Georgian Bay, known as the Nine Mile Portage. This portage was used by the Aboriginal peoples, French explorers, missionaries, fur traders and early settlers. Hikers can access the portage trail from the fort, as well as the Ganaraska, North Simcoe Rail and Trans Canada trails, making it a hiker's paradise.

The annual Nine Mile Portage Heritage Festival takes place each September.



ADDRESS: 2714 Grenfel Road, Springwater Township

GPS COORDINATES: X-593999.6574, Y-4916321.841

DIRECTIONS: From Cty.Rd.90, turn north onto George Johnson Road, follow for 8 km and turn left onto Portage Road, which turns into Grenfel Road. Turn right at the front gates of the fort.

Nottawasaga Bluffs



Admission Fee



Camping



Cross Country Skiing



Hiking



Picnic Facilities

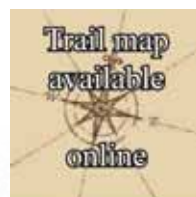


Snowshoeing



Explore the Niagara Escarpment with a hike through a series of caves, hardwood and coniferous forests and open meadows. See the countryside vista from the lookout point. This 400-acre conservation area offers a full day of exploration and adventure. See the area where pioneers once toiled to cut a living out of the wilderness. Timber and limestone proved to be big business for this area. Hike the Ian Lang Memorial Trail and discover traces of an old stage coach road and limestone kiln. Signs of an original homestead are still visible.

The Bruce trail passes through this conservation area. Overnight camping is permitted for Bruce Trail hikers only on a first come-first served basis.



ADDRESS: 8861 Nottawasaga 15/16 Sideroad, Clearview Township

GPS COORDINATES: X-562916.718, Y-4910256.497

DIRECTIONS: Take Hwy 124 to the Village of Singhampton. If travelling southbound, just before the village, turn left onto Mill Town Road, then left onto Ewing Road, followed by a left onto Nottawasaga 17/18 Sideroad, which turns into Concession 10. Follow and turn left onto Nottawasaga 15/16 Sideroad. Follow for 500 metres, trailhead is on the right. If travelling northbound on Hwy 124, turn right onto Mill Town Road then right onto Ewing Road. Follow remainder of directions above.

Petun



Camping



Hiking



Picnic Facilities



Snowshoeing



Please note: A portion of the property is leased by the Georgian Triangle Anglers Association. Public use is welcome through club approval.



Admission Fee

Hike through this conservation area at one of the highest elevations on the Niagara Escarpment. It was named for the Aboriginal peoples who inhabited the land during the early 1600s, practicing corn horticulture and taking part in the fur trade. The Bruce Trail connects with this 100-acre site. Follow it as it winds its way through a myriad of rock faces, cliffs and crevices.

Overnight camping is permitted for Bruce Trail hikers only on a first come-first served basis.



ADDRESS: 675485 2nd Line, Town of the Blue Mountains

GPS COORDINATES: X-555074.9393, Y-4921761.547

DIRECTIONS: From Collingwood, travel west on 6th Street to Osler Bluffs Road. Turn left and travel south to Grey Road 19. Turn right and follow until 2nd line appears on your left.

Glencairn



Fishing



Admission Fee

Enjoy a few hours at this scenic getaway. The Mad River winds through the conservation area, offering opportunities for fishing.



ADDRESS: 8948 Webster Road, Adjala-Tosorontio Township

GPS COORDINATES: X-578101.6408, Y-4905829.97

DIRECTIONS: Located in the Village of Glencairn at the junction of Webster and Hogback roads.

Osprey Wetlands



Cross Country Skiing



Fishing



Hunting



Picnic Facilities



Snowshoeing

Best seen by snowshoe in the winter months, this wetland spans 6,500 acres, 700 of which are owned and managed by the NVCA. There is a diverse array of wildlife habitat including a unique esker (long winding ridge of sand and gravel) surrounded by pockets of White Pine, Black Spruce and mixed hardwoods. It is an area of natural scientific interest (ANSI).



Admission Fee



ADDRESS: 309000 Centre Line B, Grey Highlands

GPS COORDINATES: (Area 1) X-559340.3778, Y-4903434.135
(Area 2) X-553071.4178, Y-4901518.958

DIRECTIONS: From Hwy 124, turn left onto Centre Line B. Travel 2 km to visit Area One or 8 km to visit Area Two.

NVCA Land Management

The conservation areas listed in this brochure are only a few of the many thousands of acres of land owned and managed by the NVCA. We focus on acquiring lands for the long-term protection of ground and surface waters and significant flora and fauna habitat. For example, our Boyne Springs property in Mulmur Township, is one of the headwater tributaries for the Boyne River and supplies high quality cold water for a variety of trout species.

Our conservation areas are acquired through financial assistance or land donations from agencies and private individuals. For more information on this program, please call the Director of Land Operations & Stewardship Services at (705) 424-1479.

Please note that these conservation areas are leased out to vary from those charged by the NVCA. Annual

Edenvale



Admission Fee



Canoeing



Fishing



Hiking



Picnic Facilities



This conservation area is a popular destination for canoe and kayakers. Situated on the banks of the Nottawasaga River, it is known locally as the “take out” after a canoe trip through the Minesing Wetlands.

This area can be used for overnight camping by people arriving by canoe only for \$5 per person.

MANAGED BY: Township of Springwater

PHONE #: 705-728-4784

ADDRESS: 3920 Hwy 26, Springwater Township

GPS COORDINATES: X-587441.1149, Y-4922547.56

DIRECTIONS: In the Village of Edenvale on the north side of Hwy 26, west of the Nottawasaga River.



New Lowell



Admission Fee



Picnic Facilities



Camping



Swimming



Canoeing



Come for a day of swimming or a season of camping. Enjoy two large sandy beaches (water tested weekly by the Simcoe Muskoka District Health Unit), a large reservoir for fishing, paddleboating or canoeing, a picnic pavilion and walking trails. The seasonal campground has large wooded sites with hydro and water, a clubhouse, washrooms with showers and laundry facilities, all in a quiet family setting.

MANAGED BY: Jane and Willy Ivits **PHONE #:** 705-424-2942

ADDRESS: 20 Clarendon St. (day use), 2894 Hogback Road (seasonal campground), Clearview Township

GPS COORDINATES: (Day use) X-581711.4735, Y-4911914.585, (Camping) X-581837.963, Y-4911515.038

DIRECTIONS: Both Clarendon St. and Hogback Road intersect with County Road 9 in the Village of New Lowell.



municipalities, community groups or individuals and gate fees may passes are not valid at these locations.

Tottenham



Admission Fee



Snowshoeing



Camping



Swimming



Cross Country Skiing



Cycling



Fishing



Picnic Facilities

Large parkland overlooks picturesque pond. The sandy beach and pavilion are ideal for a summer day spent swimming and picnicking. The park offers offers camping and fishing. See wildlife, particularly in the late spring and fall, on the nature trails, including blue herons, red foxes, pheasants, Trumpeter swans and a variety of birds.



MANAGED BY: Town of New Tecumseth

PHONE #: 905-729-1260

GPS COORDINATES: X-595142.917, Y-4874846.978

DIRECTIONS: From Hwy 400 & Hwy 9, travel west to Tottenham Rd. Take Tottenham Rd north to Mill St. Go west (left) on Mill St. and the park will be on the left over the railway tracks.

Utopia



Cross Country Skiing



Fishing



Hiking



Picnic Facilities



Snowshoeing



Admission Fee

This conservation area is used for passive recreation. The site is home to historic Bell's Grist Mill.

MANAGED BY: Friends of the Utopia Gristmill & Park

PHONE #: 1-877-499-4255

ADDRESS: 8613 6th Line, Utopia, Essa Township

GPS COORDINATES:

X-592786.8142,

Y-4908545.013

DIRECTIONS:

From Cty.Rd.90,

turn south onto

6th line and travel

to entrance on

the left.



NVCA watershed &



conservation areas

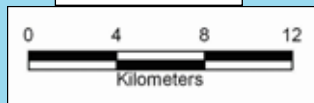
The NVCA watershed is a large geographic area, spanning approximately 3,700 square kilometres, with jurisdiction in 18 municipalities in the counties of Simcoe, Dufferin and Grey.

Significant landform features in the watershed include:

- Oak Ridges Moraine
- Oro Moraine
- Internationally-significant Minessing Wetlands
- Osprey Wetlands
- Niagara Escarpment
- Georgian Bay shoreline

Legend

-  Conservation Areas
-  NVCA Boundary
-  Municipal Boundary
-  Water Network
-  Water Body

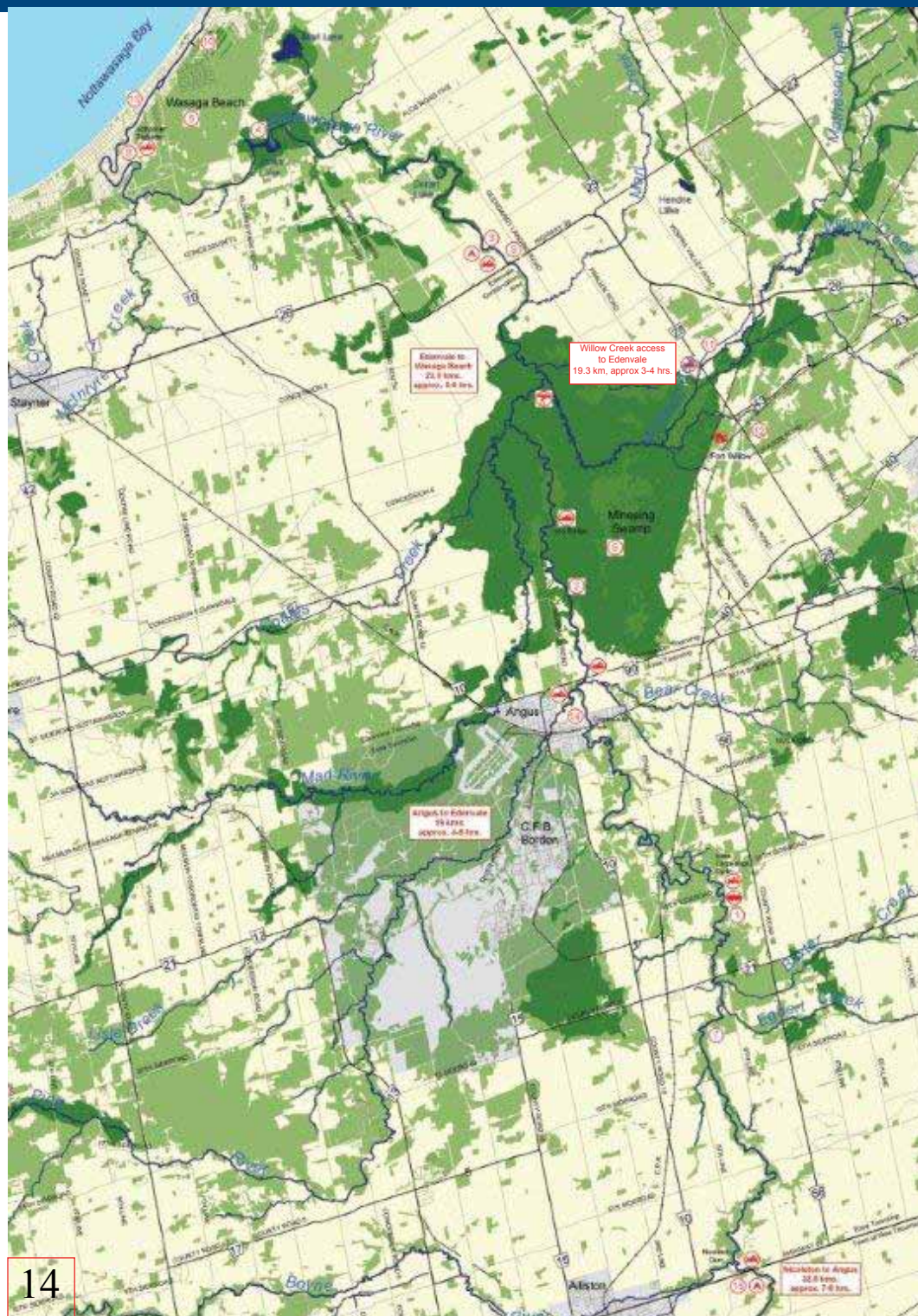


Did you know?

The Nottawasaga River stretches **121 km** and drops **300 m** from its headwaters to its mouth.



Nottawasaga River



Canoe Route

The canoe route starts near the Hamlet of Nicolston on Highway 89 and takes you some 75 km downstream to Schooner Town parkette in Wasaga Beach.

This route offers 3 distinctive canoeing opportunities, each being suitable as a day trip. Two or 3 day trips covering the entire route at a comfortable pace, are also possible. Camping is permitted at Edenvale Conservation area to accommodate these longer trips.

The river remains passable throughout the season from Essa Centennial Park downstream to Wasaga Beach. The

section from Essa Canoe Access downstream to Essa Centennial Park may require some portaging and lining during low water levels.

Most flooding occurs during the spring and canoeing is not recommended during these heavy flood periods, without a qualified guide.

Landscape

- ① Gorge and Rapids
- ② Bottom part of Post Glacial Lake Algonquin
- ③ Gorge through Edenvale Moraine
- ④ Wasaga Beach Spit

Flora and Fauna

- ⑤ Linear Vegetation pattern
- ⑥ The Minesing Swamp





Private Lands

- ⑦ Pine Forest Plantations

History

- ⑧ Schooner Town
- ⑨ The Glengarry Landing Historical Plaque
- ⑩ Nancy Island Historic Site
- ⑪ Willow Creek Canoe Route
- ⑫ The Nine Mile Portage
- ⑬ Wasaga Beach
- ⑭ Angus
- ⑮ Nicolston

LEGEND

-  Canoe Access/Egress
-  Canoe Camping only
-  Rapids
-  Portage

- ⑫  Interest Points
-  Wetlands
-  Woodlands

1:75,000



1 0 1 2 Miles

1 0 1 2 3 Kilometers

Host your next event at the *Tiffin Centre*

Weddings Corporate Events Children's Birthday Parties

Tiffin Centre facilities include:

- the John L. Jose Environmental Learning Centre (seats up to 100 people)
- a picnic pavilion
- an outdoor classroom
- a group campground
- a low ropes challenge course

Many picturesque sites for your ceremony and photos, including a boardwalk, gazebo and 2 ponds.

Visit www.nvca.on.ca for rates and details.

Catering services provided exclusively by
Casal Catering - www.casalcatering.ca



Nottawasaga Valley Conservation Authority
8195 8th Line
Utopia, ON, L0M 1T0
705-424-1479
www.nvca.on.ca
admin@nvca.on.ca

A member of

