



Minesing Wetlands Emergency Action Plan

January 2018



Nottawasaga Valley
Conservation Authority

For more information, or for a copy of this plan in an alternative format,
contact NVCA at 705-424-1479 or admin@nvca.on.ca.

Contents

Key Information	1
Minesing Emergency Action Plan Field Map	1
Closest Hospital	2
Emergency Contacts	2
Emergency Response Resources	2
1.0 Introduction	4
1.1 Purpose of the Emergency Action Plan	4
1.2 Roles and Responsibilities	4
1.2.1 NVCA Staff	5
2.0 General Property Description	6
2.1 Waterway Descriptions	6
2.1.1 Nottawasaga River	6
2.1.2 Mad River	6
2.1.3 Willow Creek	7
3.0 Access Points to the Interior	7
3.1 Overview of Township of Clearview Access Points	7
3.1.1 Access Point: 4150 Concession 2, Clearview	8
3.1.2 Access Point: McKinnon Road, Clearview	8
3.1.3 Access Point: Concession 5, Clearview	8
3.1.4 Access Point: Concession 7, Clearview	8
3.2 Overview of Township of Springwater Access Points:	8
3.2.1 Access Point: Townline - County Road 90 between Line 5 and Line 6	9
3.2.2 Access Point: Baldwick Lane	9
3.2.3 Access Point: Pinegrove Road	9
3.2.4 Access Point: Willow Landing – Canoe Corral	10
3.2.5 Access Point: Glengarry Landing Road South	10
3.2.6 Access Point: Richardson Road	10
3.2.7 Access Point: Edenvale Conservation Area	10
3.2.8 Access Point: McNabb Road	10
4.0 Buildings and Other Structures	11
5.0 Primary Wetland Users	11
6.0 Support Tools for the Wetland User	12
6.1 Roadside Information Signs	12
6.2 Handouts/Website	12
6.3 Minesing Hunter Map	16
6.4 Minesing Wetlands Emergency Locate Maps	17
Appendix A – Direct Emergency Contacts	18

Closest Hospital

The closest hospital to Minesing Wetlands is the Royal Victoria Hospital, located at 201 Georgian Drive, Barrie, ON L4M 6M2

Emergency Contacts

IN CASE OF AN EMERGENCY DIAL 911

Direct contacts for NVCA and local emergency services can be found in appendix A (as this list contains personal numbers, it is not included in any online versions).

Emergency Contact	Number
Ontario Provincial Police (OPP)	1-888-310-1122
Essa Fire Department	705-424-5828
Clearview Fire Department	705-428-6230
Springwater Fire Department	705-728-4784 (ext. 2016)
Ministry of Environment (MOE)	1-800-565-4923
Environmental Emergencies (MOE)	1-800-268-6060

Emergency Response Resources

Table 1: Water Equipment

Equipment	Source
Aluminium boat with outboard motor	Midland OPP
Aluminium boat with outboard motor	OPP - Orillia
Not motorized craft	Clearview Fire
Water rescue suit (8)	Clearview Fire
16 foot jon boat with outboard motor	NVCA

Table 2: Land Equipment

Equipment	Source
All-terrain vehicle (ATV) (2)	Hurononia West OPP
Snowmobile (2)	Hurononia West OPP
Tracked ATV with stretcher trailer	Clearview Fire

Equipment	Source
Wheeled ATV and trailer	Springwater Fire
Wheeled ATV	NVCA

Table 3: Air Equipment

Equipment	Source
Helicopter	OPP - Orillia

Table 4: Other Equipment

Equipment	Source
Thermal imaging cameras (6)	Clearview Fire
Emergency Response Team	Dispatched as required

Minesing Wetlands Emergency Action Plan

This document is for use by first responders in the event of an emergency situation within Minesing Wetlands. This information has been developed for use in the absence of active involvement of the property owners or managers during an ongoing incident response.

This Emergency Action Plan includes information about:

- Access points into the interior of Minesing Wetlands
- Internal information systems that may be used by emergency personnel and the public to respond to an ongoing incident (including signs, marker posts and display panels)
- References for NVCA staff on involvement in emergency situation activities

1.0 Introduction

The Nottawasaga Valley Conservation Authority owns over half of Minesing Wetlands (3,932 ha of the ~6,000 ha) the remainder owned by a number of public and private landowners. The wetland spans three municipalities, Clearview, Essa and Springwater.

1.1 *Purpose of the Emergency Action Plan*

The purpose of this plan is to outline the series of tools that are in place to assist first responders, NVCA and the public in the event of an emergency within the Minesing Wetlands.

1.2 *Roles and Responsibilities*

Because of the vast area Minesing Wetlands encompasses, a number of emergency service agencies have been engaged as part of the Emergency Action Plan, including Springwater Fire, Essa Fire, Clearview Fire, Barrie Fire, Barrie Police, Simcoe Paramedic Services. Other agencies may be involved should the tools/equipment/training not be available within the service providers within the area (e.g. Tiny Fire may be involved if an air boat is required).

Fire Protection and Prevention Act (Fire Departments-FD) is in charge of rescue. Ontario Provincial Police (OPP) does search (emergency response team), as all searches are assumed to have a criminal aspect until the individual is located. Once located, it turns into a rescue scenario involving the FDs. The County is not involved until it either becomes a situation from a tactical perspective or Emergency Medical

Services (EMS) situation. A County supervisor may be at the site to determine the need and to avoid self-deployment.

Police, Fire and Emergency Medical Services are the first responders trained to handle any type of emergency that may occur within Minesing Wetlands. In all emergencies the first action of NVCA staff and members of the public is to call 911 and rely on the expertise of these services to respond during an emergency. It is helpful to 911 staff to indicate the Township in which the emergency is occurring for them to be able to send the appropriate responders.

1.2.1 NVCA Staff

NVCA staff will not engage in duties or activities for which they have not been properly trained or provided with the appropriate personal protective equipment, or that put them or others at undue risk of injury.

All staff who are involved in an emergency situation involving Minesing Wetlands will follow the Crisis Communication Plan, particularly the Crisis Communication Policy of which an excerpt is included below:

- a. In emergency situations, maintaining the safety and security of those on site (staff, visitors, members of the public) is paramount, and takes precedent over all other matters.
- b. All crises (emergencies and/or issues that may negatively affect the reputation of organization) should be reported to the appropriate manager, director and CAO immediately.
- c. Only the chief spokesperson and back-up spokespeople are authorized to release information to the media and to the public. All other staff, board and committee members should be professional and helpful to the media by connecting them with the spokespeople, but will neither speak to the media, nor provide any information.

For media inquiries in all emergency situations, take the name and contact information and provide this information to the appropriate crisis correspondence lead representative. This individual or other NVCA staff trained in crisis communications will respond to all media inquiries. Staff should not provide comment to media or release any information regarding an emergency situation, and should indicate that staff are responding to the situation and that the appropriate person will provide comment when available.

2.0 General Property Description

Set within a landscape of agricultural fields, residential nodes and upland forests, Minesing Wetlands stands alone as a complex of treed swamp, marsh, fen and floodplain forest, located along the Nottawasaga and Mad Rivers, Willow and Coates Creeks.

Minesing Wetlands consists of NVCA owned lands, as well as privately owned and publicly held properties. Many users assume that all of Minesing Wetlands is entirely publicly accessible, but there are several internal parcels that are not.

Minesing Wetlands consists of three main waterways, the Nottawasaga and Mad Rivers and Willow Creek. There are also smaller waterways including Coates Creek that meet up at the north end of the Wetlands to form the larger Nottawasaga River.

2.1 Waterway Descriptions

2.1.1 Nottawasaga River

The main public access point for water travel on the Nottawasaga River is off of Highway 90, just outside of Angus. From this location small watercraft (canoe/kayak/aluminum boat with motor) would be utilized typically from April to November.

Emergency responders should expect log jams which will require pulling their watercraft over or around. These log jams shift in location every year and precise locations are difficult to identify.

There is ample parking at the 'Essa **Fish Park**' at 888 Don Ross Drive and at 378 Mill Street. Alternate access may be achieved from the Edenvale Conservation Area. Please see section 3.2.7 for details on the Edenvale CA access point.

2.1.2 Mad River

The main public access point for the Mad River is from 4150 Concession 2, Clearview. From this location, paddlers may use kayaks, canoes and possibly a small jon boat during high water (April to early June).

Emergency responders should expect log jams which will require being able to pull their watercraft over or around. Please see section 3.1.1 for details on the Concession 2 access point.

During high water, emergency responders will be able to navigate the entire marsh and may find it difficult to identify the river channels.

2.1.3 Willow Creek

The main public access point for Minesing Wetland – Willow Creek is the George Johnston Road canoe corral, however, access to Willow Creek may be achieved from alternate locations, depending on the location of the rescue.

Paddlers may use kayaks, canoes and possibly a small jon boat during high water (April -early June) to access Willow Creek. During lower water conditions, paddlers will likely have sand bars downstream of narrows which may require pullovers or downed woody debris which will have to be navigated (under/around/over). There are also tight, hairpin turns which will be challenging to navigate with a long watercraft. During high water, emergency responders will likely be able to navigate the entire wetland and will not be restricted to the river channels.

Please see section 3.2.4 for details on the George Johnston Road (Canoe Corral) access point.

3.0 Access Points to the Interior

There are a number of formal and informal access points around the wetland. Some of the formal access points have signage and/or an information kiosk with a map of the area. There are an unknown number of private access points which may be used in the event of an emergency. Because of the unknown nature of each emergency situation, approval for private access to Minesing Wetlands was not covered in this plan and would have to be obtained on a case by case basis by first responders.

Boat launches are available at the Essa Fish Park and Edenvale Conservation Area (Nottawasaga River).

“Nearest address” indicates the closest address to the access point that is private property.

3.1 Overview of Township of Clearview Access Points

1. 4150 Concession 2, Clearview (sign at entrance)
2. McKinnon Road, Clearview- unopened road allowance (nearest address 9605 McKinnon Road) (sign at entrance)
3. Concession 5, Clearview (nearest address: 4440 Concession 5) (no sign at entrance)
4. Concession 7, Clearview (nearest address: 4012 Concession 7) (no sign at entrance)

Details of each access point follow.

3.1.1 Access Point: 4150 Concession 2, Clearview

This access point provides parking for approximately 5 vehicles, however due to the infrequent traffic on this gravel road, additional emergency response vehicles could be stationed along Concession 2.

Most NVCA staff and all applicable emergency response departments (Springwater/Clearview/Essa fire and Wasaga/NewTecumseth OPP detachments) have a key for the gate which provides access to the driveway and lookout tower. This access point also provides access to the Mad River. Emergency responders are able to get water access north into Minesing Wetlands from this location.

3.1.2 Access Point: McKinnon Road, Clearview

This access point provides parking along the road side only. There is a narrow shoulder and emergency response vehicles will likely have to block this dead end road.

Four wheel drive trucks **and ATV's are able to drive approximately 2km north until** reaching the condemned McKinnon Bridge. The structural stability of this bridge is unknown and using it is not recommended. This bridge however, is part of the official OFSC trail network identified as trail 502 and joins with the County Road 90 Springwater/Essa access point (below).

This access point is used for fishing access as well as for paddling the Nottawasaga River.

3.1.3 Access Point: Concession 5, Clearview

This access point provides parking along the road side only. Emergency response vehicles will likely have to block this dead end road.

3.1.4 Access Point: Concession 7, Clearview

This access point is not advertised to hunters or recreational users, however there is a drain which canoers use to access the Coates Creek. This access point is only used during high water levels for boat access only.

3.2 Overview of Township of Springwater Access Points

1. Off of County Road 90 between Line 5 and Line 6, heading north, unopened road allowance (nearest address 6088 Highway 90) (no sign at entrance) Official Ontario Federation of Snowmobile Clubs (OFSC) trail network. Note this is the dividing line between Springwater and Essa. To the west is Springwater, to the east is Essa.

2. Baldwick Lane (nearest address 3221 Baldwick Lane) (no sign at entrance)
3. Pinegrove Road (across from nearest address 3021 Pinegrove Road) (no sign at entrance)
4. Willow Landing- Canoe Corral (2220 George Johnston Road) (information kiosk at entrance)
5. Glengarry Landing Road South (nearest address 1610 Glengarry Landing Road South) (sign at entrance)
6. Richardson Road (nearest address 1503 Richardson Road) (no sign at entrance)
7. Edenvale Conservation Area (3920 Hwy 26 Springwater) (sign at entrance and within property)
8. Informal entrance at McNabb Road- unopened road allowance (nearest address 1135 McNabb Road)

Details of each access point follow.

3.2.1 Access Point: Townline - County Road 90 between Line 5 and Line 6

This access point provides vehicle access north along the **'Townline' road allowance** and links with the McKinnon Road trail. This access point is used as part of the official OFSC trail and is by recreational vehicles. This gate is usually locked and NVCA staff and all applicable emergency response departments have a key for access.

Once the gate has been opened, there is ample parking in the field under the hydro corridor. Highway 90 also has a wide shoulder which would allow for emergency vehicle parking if required. Access to the road allowance may also be possible through the adjacent field if emergency responders are unable to open the gate.

3.2.2 Access Point: Baldwick Lane

There is limited parking at this location. Emergency response vehicles will likely have to block this dead end road. There are no maintained trails past this point.

3.2.3 Access Point: Pinegrove Road

There is parking at this site for approximately 4 vehicles; all other emergency response vehicles would have to park on the shoulder of the road. This access point enters into the Simcoe County Forest Miller Tract (east).

Logging trails throughout the property provide access to the western edge of the property and into Minesing Wetland. Motorized vehicles may access the County Forest, but there is a limited trail access past this point, and no formal trails are maintained.

3.2.4 Access Point: Willow Landing – Canoe Corral

This access point is the main public access point to Willow Creek, there is parking for approximately 20 vehicles in this seasonally maintained parking lot. This is an ideal staging area for emergency responders to access the eastern portion of Minesing Wetlands.

Should a helicopter be required, there should be enough space available (without vehicles) to park the helicopter in the parking lot or in the adjacent field.

3.2.5 Access Point: Glengarry Landing Road South

This access point accommodates road side parking only, or approximately 3 vehicles at the dead end of Ronald Road.

3.2.6 Access Point: Richardson Road

This access point provides parking along the shoulder of the road only and walk-in access only. There are no motorized vehicle trails from this location and no easy boat access.

3.2.7 Access Point: Edenvale Conservation Area

This access point is frequently used as the northern exit point for paddlers through Minesing Wetlands. There is parking for over 50 vehicles should it be required. There is also an adjacent mowed recreation field which will accommodate additional vehicles or helicopter, should that be required.

There is an area to launch a small boat which would allow access to the north part of the Nottawasaga River, pending any fallen logs or woody debris, first responders can expect to **travel up to 'the confluence' of the Willow Creek and Mad Rivers.**

3.2.8 Access Point: McNabb Road

McNabb Road (unmaintained road allowance) dead ends at the Nottawasaga River, this access point provides access to the northern portion of Minesing Wetlands. There is no formal parking at this location other than on the unmaintained portion of allowance.

Access to the Nottawasaga River may be achieved from here, the natural streambank will allow for small watercrafts to be launched, reducing the time required to access the interior of the wetland compared to the Edenvale CA.

4.0 Buildings and Other Structures

There are no NVCA buildings or infrastructure within the interior of Minesing Wetlands. At several access points to the wetland there are information kiosk and/or signs. The canoe corral, located off of George Johnston Road has a seasonal dock placed within Willow Creek and a seasonal outhouse.

There is a parking lot and lookout tower located at Concession 2 Clearview Township, which is seasonally accessible.

5.0 Primary Wetland Users

There are two formal, maintained hiking trails within Minesing Wetlands (see images 1-2). The Meadow Mouse trail (approximately 500 meters) enters the wetland off of George Johnston Road alongside the canoe corral parking lot. The Mad River trail (approximately 1,100 meters) enters the wetland off of 4150 Concession 2, Clearview Twp. Both trails are vehicle accessible, though the Mad River Trail is only seasonally accessible due to of flooding. The trails surfaces are mown grass approximately 2 meters wide.

During the spring/early summer/late the interior of the wetland is accessible by watercraft (kayak/canoe/small aluminum boat with motor) (see images 3 for paddle map). The flooding causes the defined waterways to become virtually impossible to identify and paddlers often lose their bearings becoming lost. Late summer access to the interior of the wetland is not always possible depending on the water conditions. Some paddlers may get stuck in the mud flats or in log jams. Motorized watercraft access is considered to be limited year round.

The property is used for hunting, mainly waterfowl and deer, but also turkey and small game. Hunters must obtain a permit from NVCA to have permission to hunt NVCA owned property. All hunters are provided with a map which identifies entry locations to the wetland and delineates the property boundaries (see image 4). Hunters are not permitted to access the property using a motorized vehicle (all-terrain vehicle). Hunters are not required to request permission to access for each individual hunting outing.

Interest in the natural features of Minesing Wetlands has been increasing over the years, resulting in a noticeable increase in naturalist visiting the interior of the site.

Snowshoeing may occur throughout much of the property; however users are directed to the primary entrance locations noted above.

There is a daily parking fee for users of the property; this cost is included in the cost of purchasing a hunting pass. NVCA tracks vehicle licence plates of individuals who have purchased a parking or hunting pass.

NVCA does not generally undertake timber extraction and farming; however adjacent private property owners do and may require emergency services.

NVCA staff and volunteers have been actively promoting tree planting and stewardship activities within Minesing Wetlands. For the most part, these activities have been focused around the primary entrances identified above. Although NVCA staff and volunteers take all reasonable safety precautions, emergency services may be required.

6.0 Support Tools for the Wetland User

Access to Minesing Wetlands is widely publicized in a variety of formats both officially through NVCA websites and publications and informally through user groups such as the Ontario Federation of Snowmobile Clubs and Brereton Field Naturalists.

6.1 *Roadside Information Signs*

There are a number of roadside information signs catering to visitors to Minesing Wetlands. There are main Minesing Wetlands information signs at the following locations:

- Ronald Road/Glengarry Landing Road,
- Wildlife Viewing Tower – Concession 2,
- Willow Landing – Canoe Corral on George Johnston Road, and
- the end of McKinnon Road.

In addition to these signs, there are tourism/recreation signs that were placed at the following locations:

- Angus on Highway 90,
- Edenvale Conservation Area, and
- Willow Landing – Canoe Corral on George Johnston Road.

6.2 *Handouts/Website*

When visitors come to the office or go to our website, they will find a number of resources, including snowshoe maps of the two main trails in Minesing and a paddle route map. Images 1-3 are maps that may be distributed to the public.

Image 1 - Meadow Mouse Trail - George Johnston Road



Image 2 - Mad River Trail Concession 2



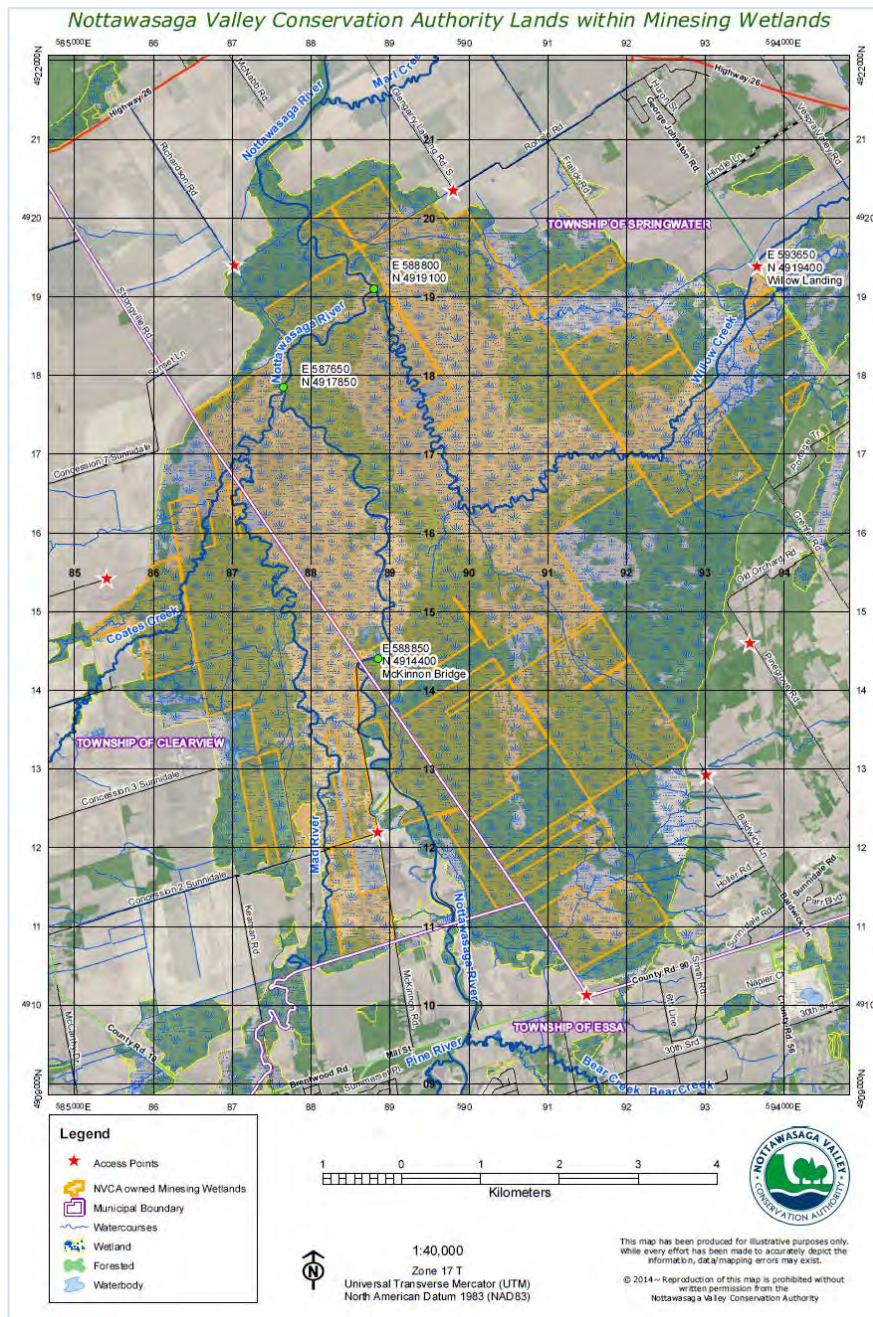
Image 3 - NVCA Canoe Route Map



6.3 Minesing Hunter Map

When hunters purchase a permit to access Minesing Wetlands, they are provided with this map which provides them with a number of access points to enter the property through publicly accessible lands (unopened road allowances, NVCA owned property or Simcoe County Forest)

Image 4 - NVCA Minesing Hunter Map



6.4 Minesing Wetlands Emergency Locate Maps

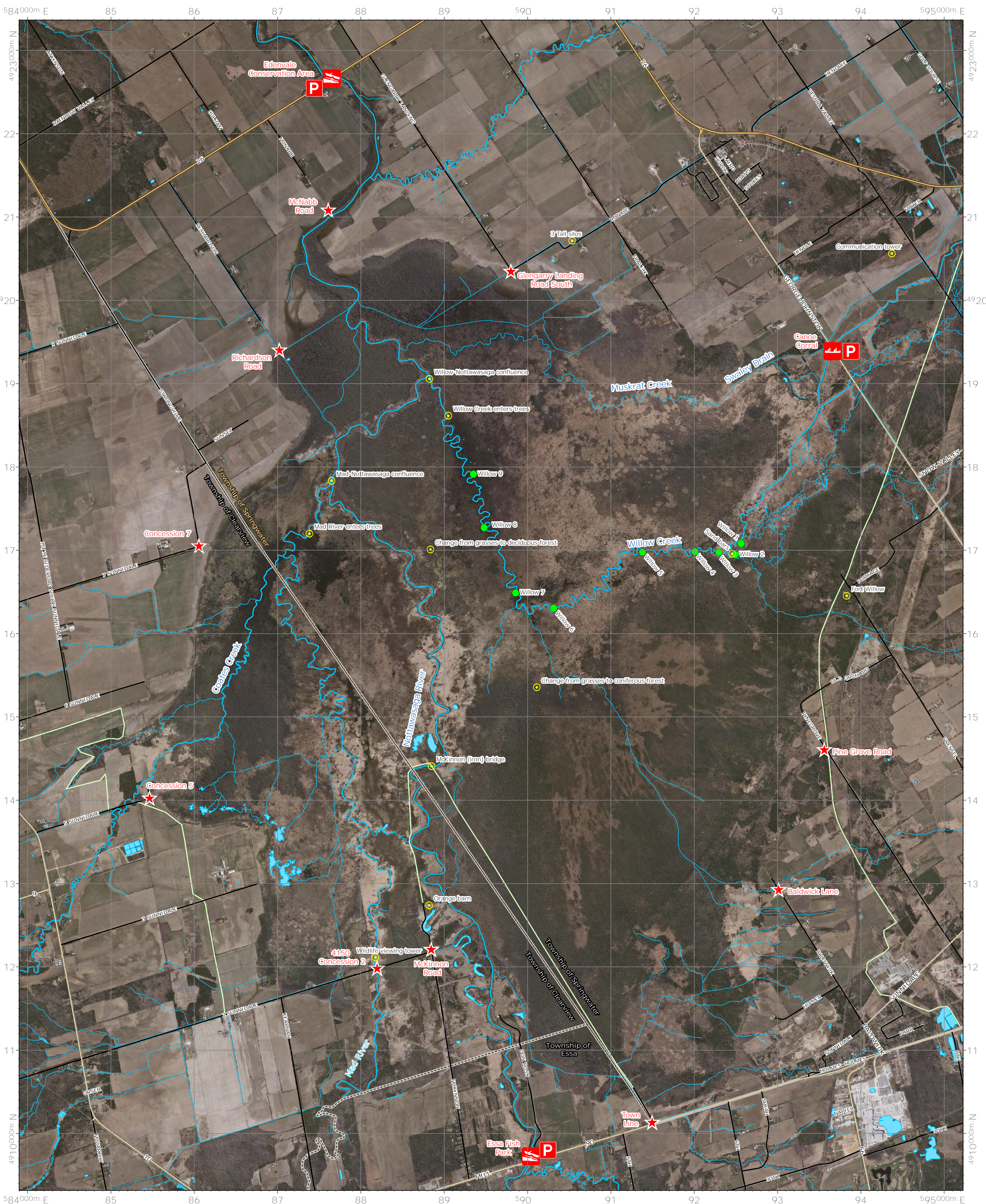
NVCA has installed nine wayfind markers along the Willow Creek. These numbered signs are intended to assist locate an individual should they get lost in Minesing Wetlands. The location of these signs are also included on the field map for reference for the first responders.

Table 5: Locations of markers

Sign Name	Latitude (DD.dddd)	Longitude (DD.dddd)
Willow 1	44.4011	-79.8376
Willow 2	44.3999	-79.8385
Willow 3	44.4002	-79.8410
Willow 4	44.4003	-79.8446
Willow 5	44.4003	-79.8525
Willow 6	44.3944	-79.8660
Willow 7	44.3961	-79.8717
Willow 8	44.4032	-79.8763
Willow 9	44.4090	-79.8778

Image 5 – Example of one of the wayfind signs





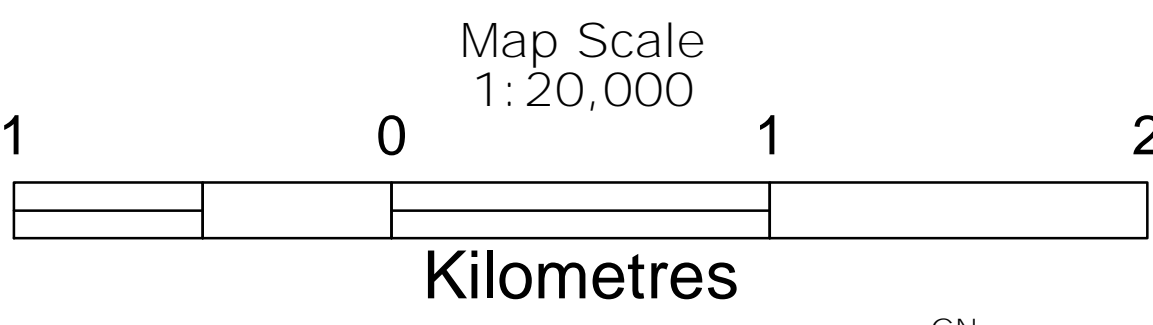
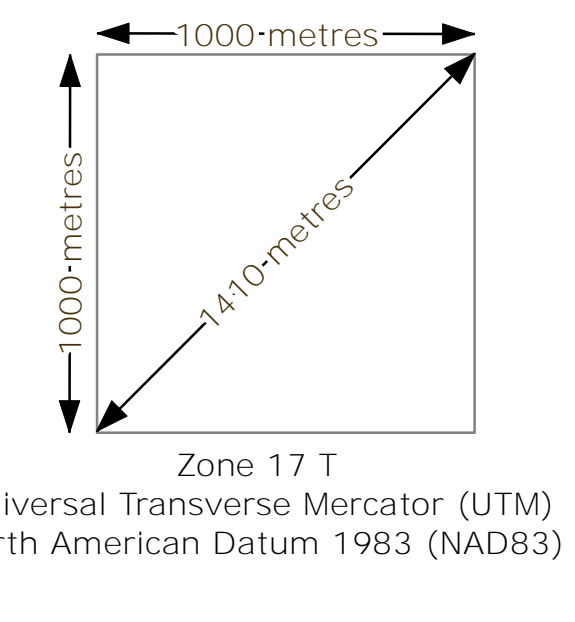
Legend

- ★ Roadside Access
- Ⓜ Landmark
- Ⓜ Municipal Boundary
- Ⓜ OFSC Snowmobile Trail
- P Parking Lot
- Ⓜ Boat Launch
- Ⓜ Canoe Launch

Landmark

- Willow-Nottawasaga confluence
- Mad-Nottawasaga confluence
- Sand bars
- Willow Creek enters trees
- 3 Tall silos
- Change from grasses to deciduous forest
- Change from grasses to coniferous forest
- Snow Valley slopes
- Wildlife viewing tower
- Mad River enters trees
- Orange barn
- McKinnon (iron) bridge
- Fort Willow
- Communication tower

UTM Eastings	UTM Northings
588822	4919056
587649	4917832
592457	4916958
589050	4918613
590536	4920714
588835	4917009
590111	4915353
596204	4918186
588174	4912112
587382	4917199
588819	4912737
588850	4914407
593830	4916451
594373	4920561



This map has been produced for illustrative purposes only. While every effort has been made to accurately depict the information, data-mapping errors may exist.

© 2017 - Reproduction of this map is prohibited without written permission from the Nottawasaga Valley Conservation Authority.

Use diagram only to obtain numerical values
Approximate Mean Declination 2017
for centre of Map

Annual Change:
0.5' per Year East

Minesing Wetlands Emergency Action Plan Field Map