

APPENDIX B – HYDRAULIC STRUCTURE INVENTORY SHEETS

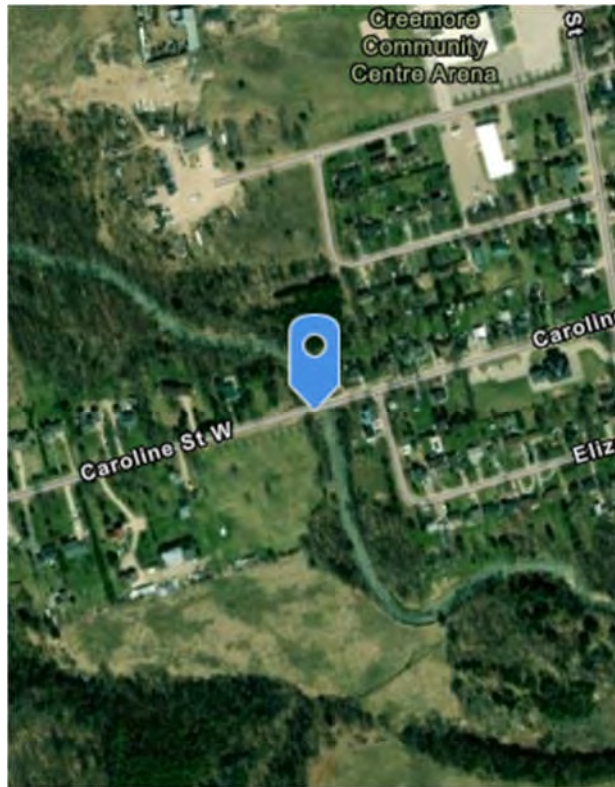
DRAFT

HYDRAULIC STRUCTURE INVENTORY SHEET

Watershed and Location Information	Structure Configuration and Dimensions		Current Flow Information
Date (mm/dd/yyyy): 10/12/2023	Structure Type: Clear Span Bridge	Shape: Rectangular	Flow Present (Y/N): Y
Field Crew: CC,OC	Number of Cells: 1	Open Footing (Yes/No): Y	Approx. Depth of Water (mm): 200
ABL ID: ABL_1	Material (Concrete/Steel): Concrete		Approx. Velocity:
Watershed Name: Upper Mad River	Span (m) = 26.43		Upstream Erosion (Y/N): N
Subcatchment Name: Upper Mad River	Length (m): 9.14		Downstream Erosion (Y/N): Y
Municipality: Township of Clearview	U/S Invert Elev. (m): 260.5264	U/S Obvert Elev. (m): 262.9746	Additional Information:
Location (Road Name/Intersection): Caroline St W	D/S Invert Elev. (m): 260.4723	D/S Obvert Elev. (m): 262.94	
	Inlet Type (Projecting/Mitered/Headwall): N/A		
	Skew Angle of Crossing (Degrees):		
	Depth of Siltation (mm): 0		

Site Photograph and Additional Field Notes

Site Sketch:



Maxar | <https://www.ontario.ca/pa...> Powered by Esri



Upstream Face



Upstream Channel



Downstream Face



Downstream Channel

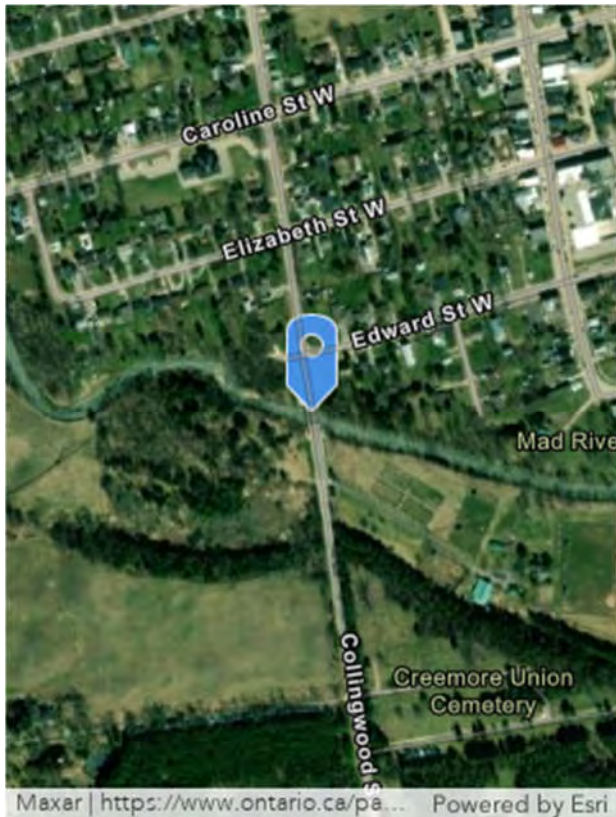
Description of Photograph:

HYDRAULIC STRUCTURE INVENTORY SHEET

Watershed and Location Information	Structure Configuration and Dimensions		Current Flow Information
Date (mm/dd/yyyy): 10/12/2023	Structure Type: Clear Span Bridge	Shape: Rectangular	Flow Present (Y/N): Y
Field Crew: CC,OC	Number of Cells: 1	Open Footing (Yes/No): Y	Approx. Depth of Water (mm): 200
ABL ID: ABL_2	Material (Concrete/Steel): Steel, Concrete		Approx. Velocity:
Watershed Name: Upper Mad River	Span (m): 27.22		Upstream Erosion (Y/N): N
Subcatchment Name: Upper Mad River	Length (m): 10.21		Downstream Erosion (Y/N): N
Municipality: Township of Clearview	U/S Invert Elev. (m): 257.64	U/S Obvert Elev. (m): 260.48	Additional Information:
Location (Road Name/Intersection): Collingwood Street	D/S Invert Elev. (m): 257.63	D/S Obvert Elev. (m): 260.05	
	Inlet Type (Projecting/Mitered/Headwall): N/A		
	Skew Angle of Crossing (Degrees):		
	Depth of Siltation (mm): 0		

Site Photograph and Additional Field Notes

Site Sketch:



Upstream Face



Upstream Channel



Downstream Face



Downstream Channel

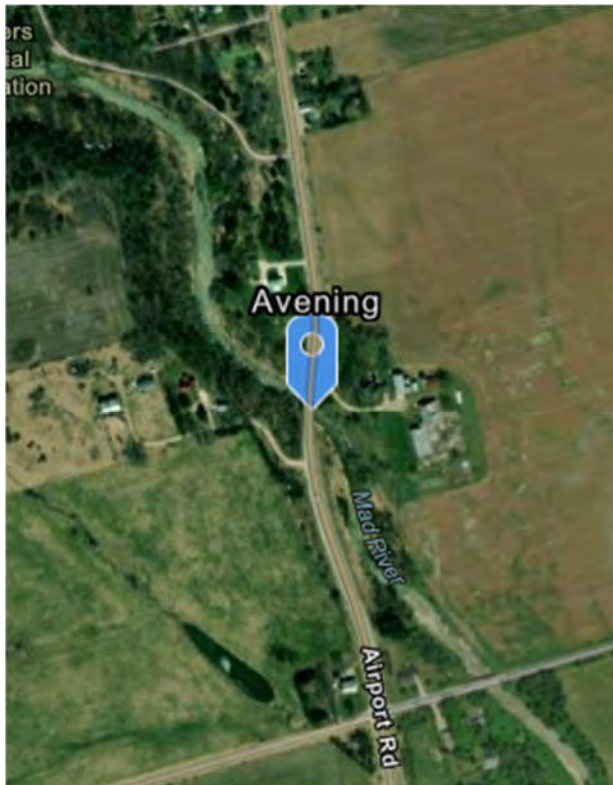
Description of Photograph:

HYDRAULIC STRUCTURE INVENTORY SHEET

Watershed and Location Information	Structure Configuration and Dimensions		Current Flow Information
Date (mm/dd/yyyy): 10/13/2023	Structure Type: Triple Cell Bridge	Shape: Rectangular	Flow Present (Y/N): Y
Field Crew: MT, CM	Number of Cells: 3	Open Footing (Yes/No): Y	Approx. Depth of Water (mm): 400
ABL ID: ABL_3	Material (Concrete/Steel): Concrete		Approx. Velocity:
Watershed Name: Upper Mad River	Span (m): 44.64m (total span noted)		Upstream Erosion (Y/N): N
Subcatchment Name: Upper Mad River	Length (m): 13.35		Downstream Erosion (Y/N): N
Municipality: Township of Clearview	U/S Invert Elev. (m): 232.4476	U/S Obvert Elev. (m): 238.16	Additional Information:
Location (Road Name/Intersection): Airport Road	D/S Invert Elev. (m): 232.5523	D/S Obvert Elev. (m): 237.78	
	Inlet Type (Projecting/Mitered/Headwall): N/A		
	Skew Angle of Crossing (Degrees):		
	Depth of Siltation (mm): 0		

Site Photograph and Additional Field Notes

Site Sketch:



Upstream Face



Upstream Channel



Downstream Face



Downstream Channel

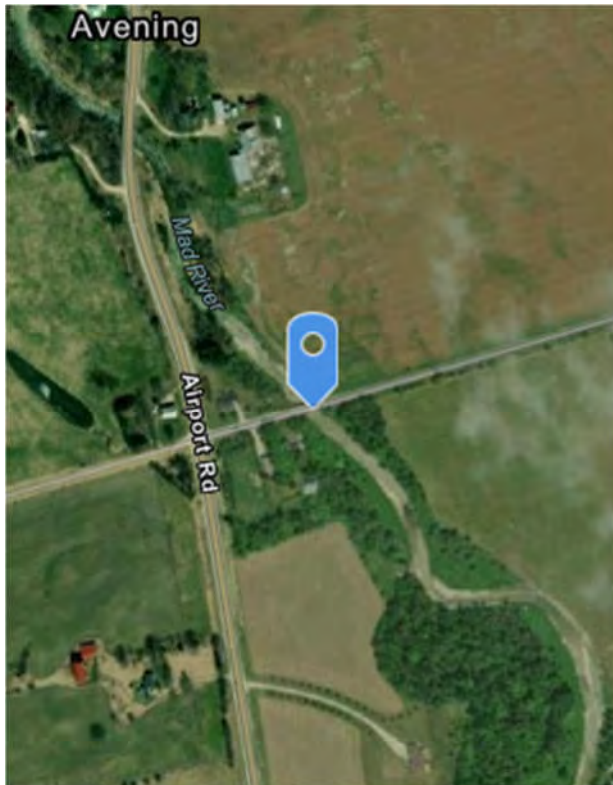
Description of Photograph:

HYDRAULIC STRUCTURE INVENTORY SHEET

Watershed and Location Information	Structure Configuration and Dimensions		Current Flow Information
Date (mm/dd/yyyy): 10/13/2023	Structure Type: Triple Cell Bridge	Shape: Rectangular	Flow Present (Y/N): Y
Field Crew: MT, CM	Number of Cells: 3	Open Footing (Yes/No): Y	Approx. Depth of Water (mm): 200
ABL ID: ABL_4	Material (Concrete/Steel): Concrete		Approx. Velocity:
Watershed Name: Upper Mad River	Span (m): 34.44		Upstream Erosion (Y/N): N
Subcatchment Name: Upper Mad River	Length (m): 9.97		Downstream Erosion (Y/N): N
Municipality: Township of Clearview	U/S Invert Elev. (m): 231.4156	U/S Obvert Elev. (m): 236.0277	Additional Information: Triangular piers are experiencing heavy scour on US end
Location (Road Name/Intersection): Nottawasaga 3/4 Sideroad	D/S Invert Elev. (m): 231.2886	D/S Obvert Elev. (m): 235.9131	
	Inlet Type (Projecting/Mitered/Headwall): N/A		
	Skew Angle of Crossing (Degrees):		
	Depth of Siltation (mm): 0		

Site Photograph and Additional Field Notes

Site Sketch:



Maxar | <https://www.ontario.ca/pa...> Powered by Esri



Upstream Face



Upstream Channel



Downstream Face



Downstream Channel

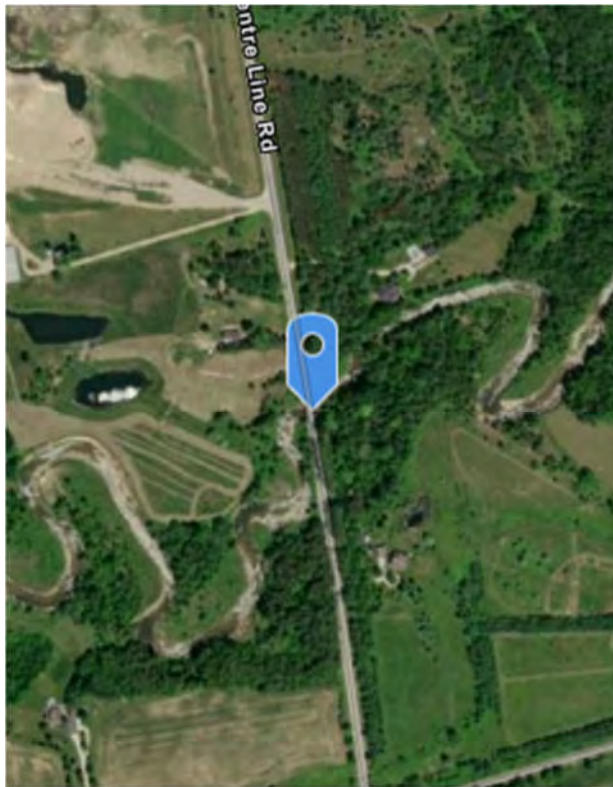
Description of Photograph:

HYDRAULIC STRUCTURE INVENTORY SHEET

Watershed and Location Information	Structure Configuration and Dimensions		Current Flow Information
Date (mm/dd/yyyy): 10/12/2023	Structure Type: Road Bridge	Shape: Rectangular	Flow Present (Y/N): Y
Field Crew: CC, OC	Number of Cells: 1	Open Footing (Yes/No): Y	Approx. Depth of Water (mm): 1,000
ABL ID: ABL_5	Material (Concrete/Steel): Steel, Wood (decking)		Approx. Velocity:
Watershed Name: Upper Mad River	Span (m): 18.5		Upstream Erosion (Y/N): N
Subcatchment Name: Upper Mad River	Length (m): 9.95		Downstream Erosion (Y/N): N
Municipality: Township of Clearview	U/S Invert Elev. (m): 216.5088	U/S Obvert Elev. (m): 220.84	Additional Information:
Location (Road Name/Intersection): Centre Line Road	D/S Invert Elev. (m): 216.0554	D/S Obvert Elev. (m): 220.47	
	Inlet Type (Projecting/Mitered/Headwall): N/A		
	Skew Angle of Crossing (Degrees):		
	Depth of Siltation (mm): 20		

Site Photograph and Additional Field Notes

Site Sketch:



Maxar | <https://www.ontario.ca/pa...> Powered by Esri



Upstream Face



Upstream Channel



Downstream Face



Downstream Channel

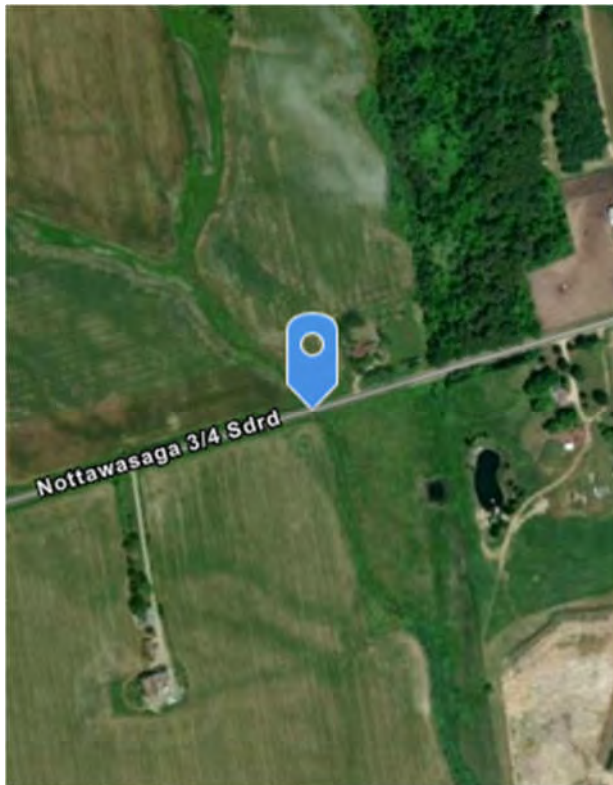
Description of Photograph:

HYDRAULIC STRUCTURE INVENTORY SHEET

Watershed and Location Information	Structure Configuration and Dimensions		Current Flow Information
Date (mm/dd/yyyy): 10/12/2023	Structure Type: Culvert	Shape: Rectangular	Flow Present (Y/N): Y
Field Crew: OC CC	Number of Cells: 1	Open Footing (Yes/No): Y	Approx. Depth of Water (mm): 200
ABL ID: ABL_6	Material (Concrete/Steel): Concrete		Approx. Velocity:
Watershed Name: Upper Mad River	Span (m) x Rise (m): 2.05 x 1.5		Upstream Erosion (Y/N): N
Subcatchment Name: Upper Mad River	Length (m): 16.24		Downstream Erosion (Y/N): N
Municipality: Township of Clearview	U/S Invert Elev. (m): 228.95	U/S Obvert Elev. (m): 230.45	Additional Information:
Location (Road Name/Intersection): 3/4 Sideroad Nottawasaga	D/S Invert Elev. (m): 228.9	D/S Obvert Elev. (m): 230.40	
	Inlet Type (Projecting/Mitered/Headwall): Projecting		
	Skew Angle of Crossing (Degrees):		
	Depth of Siltation (mm): 1,000		

Site Photograph and Additional Field Notes

Site Sketch:



Maxar | <https://www.ontario.ca/pa...> Powered by Esri



Upstream Face



Upstream Channel



Downstream Face



Downstream Channel

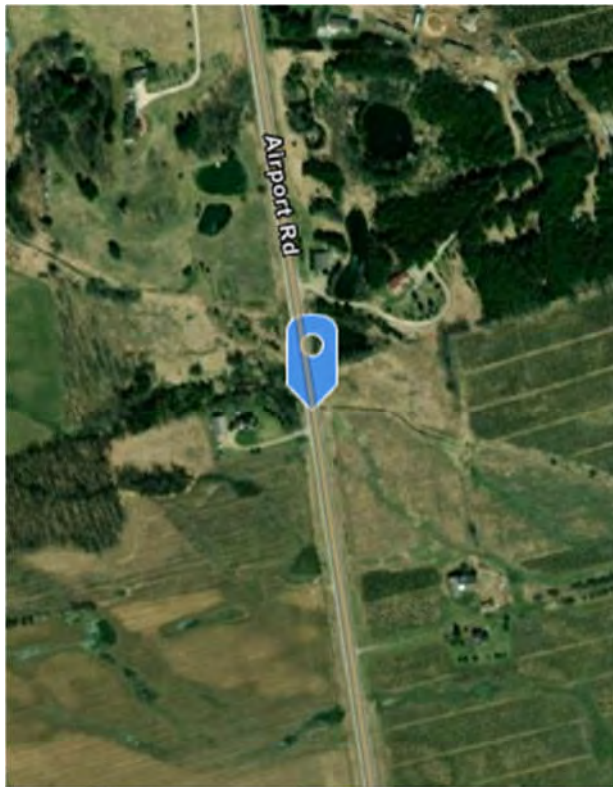
Description of Photograph:

HYDRAULIC STRUCTURE INVENTORY SHEET

Watershed and Location Information	Structure Configuration and Dimensions		Current Flow Information
Date (mm/dd/yyyy): 10/12/2023	Structure Type: Culvert	Shape: Circular	Flow Present (Y/N): N
Field Crew: OC CC	Number of Cells: 1	Open Footing (Yes/No): N	Approx. Depth of Water (mm): 0
ABL ID: ABL_8	Material (Concrete/Steel): Corrugated Steel		Approx. Velocity:
Watershed Name: Upper Mad River	Diameter (m): 1.5		Upstream Erosion (Y/N): N
Subcatchment Name: East Creemore Drain (ECD)	Length (m): 19.82		Downstream Erosion (Y/N): N
Municipality: Township of Clearview	U/S Invert Elev. (m): 243.93	U/S Obvert Elev. (m): 245.43	Additional Information:
Location (Road Name/Intersection): Airport Rd	D/S Invert Elev. (m): 243.65	D/S Obvert Elev. (m): 245.15	
	Inlet Type (Projecting/Mitered/Headwall): Projecting		
	Skew Angle of Crossing (Degrees):		
	Depth of Siltation (mm): 0		

Site Photograph and Additional Field Notes

Site Sketch:



Maxar | <https://www.ontario.ca/pa...> Powered by Esri



Upstream Face



Upstream Channel



Downstream Face



Downstream Channel

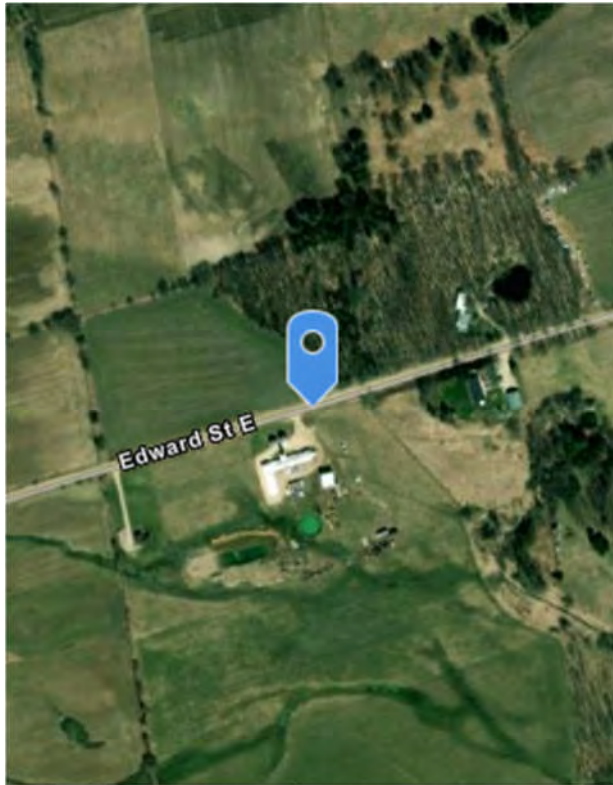
Description of Photograph:

HYDRAULIC STRUCTURE INVENTORY SHEET

Watershed and Location Information	Structure Configuration and Dimensions		Current Flow Information
Date (mm/dd/yyyy): 10/12/2023	Structure Type: Culvert	Shape: Circular	Flow Present (Y/N): N
Field Crew: OC CC	Number of Cells: 1	Open Footing (Yes/No): N	Approx. Depth of Water (mm): 0
ABL ID: ABL_9	Material (Concrete/Steel): Steel		Approx. Velocity:
Watershed Name: Upper Mad River	Diameter (m): 0.6		Upstream Erosion (Y/N): N
Subcatchment Name: East Creemore Drain (ECD)	Length (m): 19.42		Downstream Erosion (Y/N): N
Municipality: Township of Clearview	U/S Invert Elev. (m): 248.22	U/S Obvert Elev. (m): 248.82	Additional Information:
Location (Road Name/Intersection): Edward Street East	D/S Invert Elev. (m): 247.41	D/S Obvert Elev. (m): 248.01	
	Inlet Type (Projecting/Mitered/Headwall): Projecting		
	Skew Angle of Crossing (Degrees):		
	Depth of Siltation (mm): 10		

Site Photograph and Additional Field Notes

Site Sketch:



Maxar | <https://www.ontario.ca/pa...> Powered by Esri



Upstream Face



Upstream Channel



Downstream Face



Downstream Channel

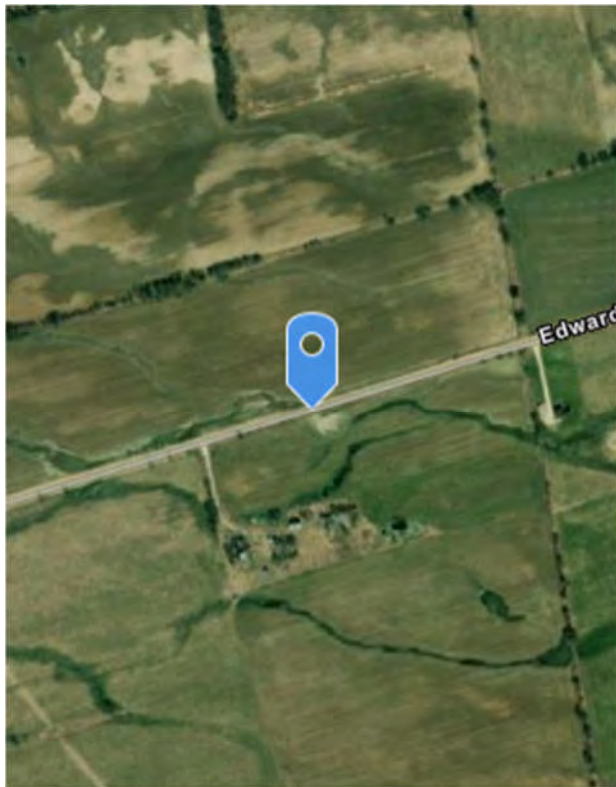
Description of Photograph:

HYDRAULIC STRUCTURE INVENTORY SHEET

Watershed and Location Information	Structure Configuration and Dimensions		Current Flow Information
Date (mm/dd/yyyy): 10/12/2023	Structure Type: Culvert	Shape: Circular	Flow Present (Y/N): N
Field Crew: CC,OC	Number of Cells: 2	Open Footing (Yes/No): N	Approx. Depth of Water (mm): 0
ABL ID: ABL_10	Material (Concrete/Steel): Steel		Approx. Velocity:
Watershed Name: Upper Mad River	Diameter (m): 0.45		Upstream Erosion (Y/N): N
Subcatchment Name: East Creemore Drain (ECD)	Length (m): 12		Downstream Erosion (Y/N): N
Municipality: Township of Clearview	U/S Invert Elev. (m): 249.52	U/S Obvert Elev. (m): 249.97	Additional Information:
Location (Road Name/Intersection): Edward St E	D/S Invert Elev. (m): 249.46	D/S Obvert Elev. (m): 249.89	
	Inlet Type (Projecting/Mitered/Headwall): Projecting		
	Skew Angle of Crossing (Degrees):		
	Depth of Siltation (mm): 10		

Site Photograph and Additional Field Notes

Site Sketch:



Maxar | <https://www.ontario.ca/pa...> Powered by Esri



Upstream Face



Upstream Channel



Downstream Face



Downstream Channel

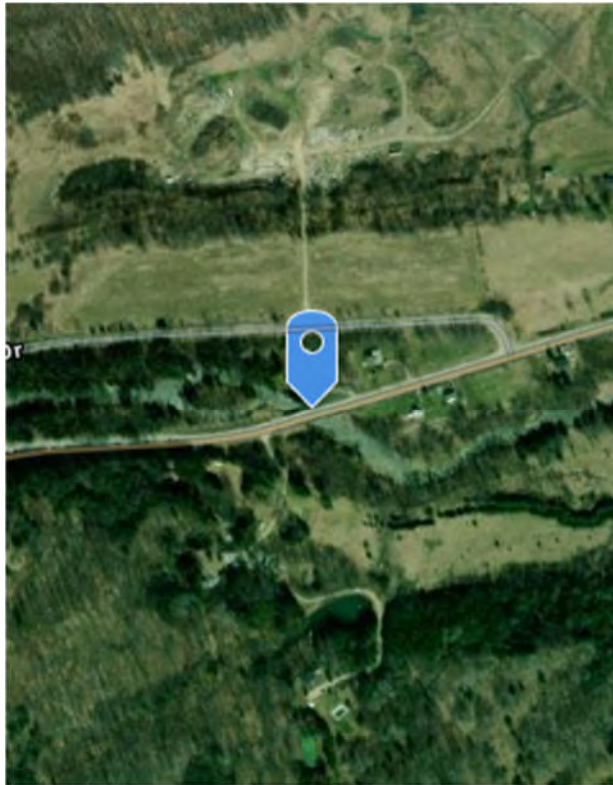
Description of Photograph:

HYDRAULIC STRUCTURE INVENTORY SHEET

Watershed and Location Information	Structure Configuration and Dimensions		Current Flow Information
Date (mm/dd/yyyy): 10/13/2023	Structure Type: Single Span Bridge	Shape: Rectangular	Flow Present (Y/N): Y
Field Crew: MT, CM	Number of Cells: 1	Open Footing (Yes/No): Y	Approx. Depth of Water (mm): 500
ABL ID: ABL_11	Material (Concrete/Steel): Concrete		Approx. Velocity:
Watershed Name: Upper Mad River	Span (m): 28.65		Upstream Erosion (Y/N): N
Subcatchment Name: Upper Mad River	Length (m): 10.38		Downstream Erosion (Y/N): N
Municipality: Township of Clearview	U/S Invert Elev. (m): 274.5989	U/S Obvert Elev. (m): 277.06	Additional Information:
Location (Road Name/Intersection): County Road 9	D/S Invert Elev. (m): 274.5478	D/S Obvert Elev. (m): 276.96	
	Inlet Type (Projecting/Mitered/Headwall):		
	Skew Angle of Crossing (Degrees):		
	Depth of Siltation (mm): 0		

Site Photograph and Additional Field Notes

Site Sketch:



Maxar | <https://www.ontario.ca/pa...> Powered by Esri



Upstream Face



Upstream Channel



Downstream Face



Downstream Channel

Description of Photograph: