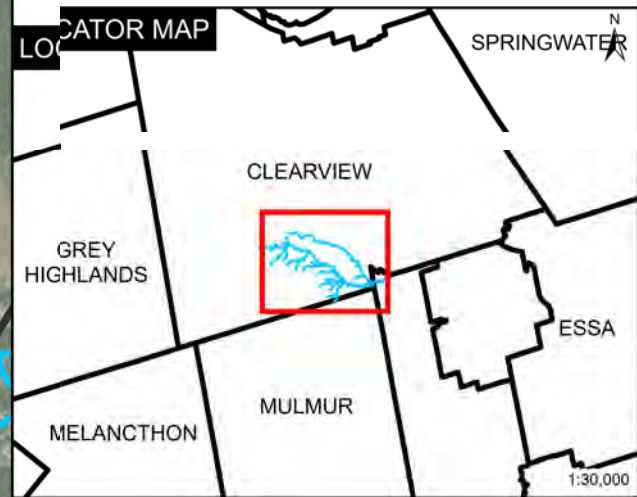


**APPENDIX C – REGULATORY FLOODPLAIN MAPPING**

DRAFT

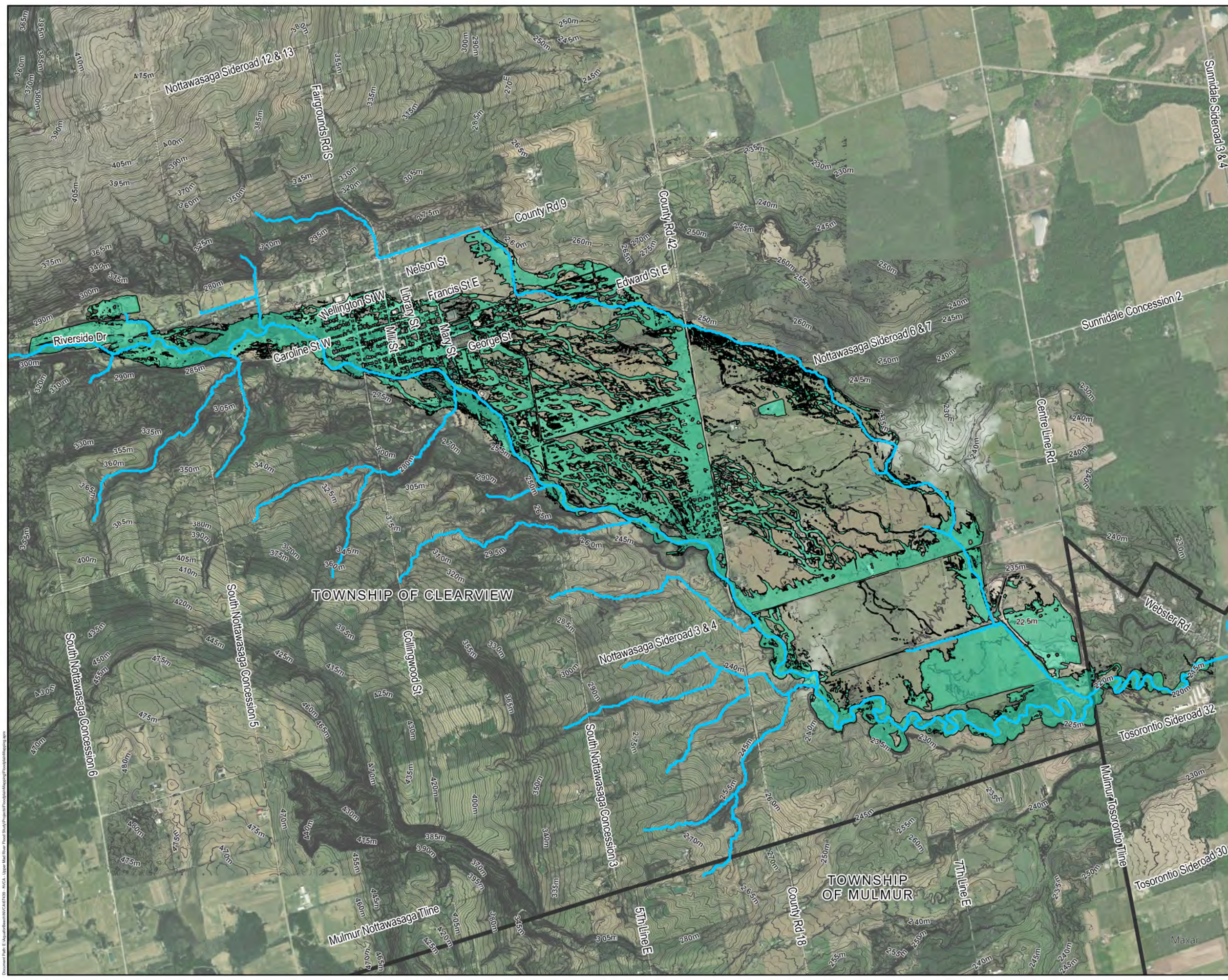
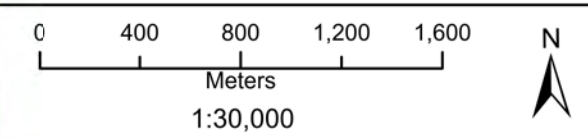


- Legend**
- Municipal Borders
  - Railway Track
  - Rivers
  - Contours
  - Regional Floodplain (Timmins)



### Regional Floodplain Mapping

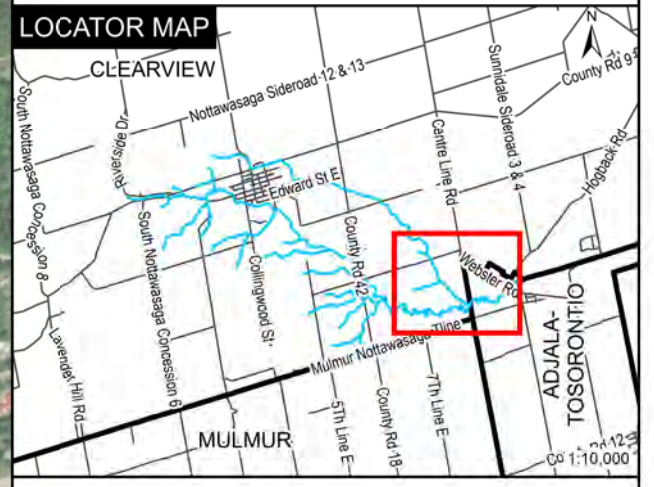
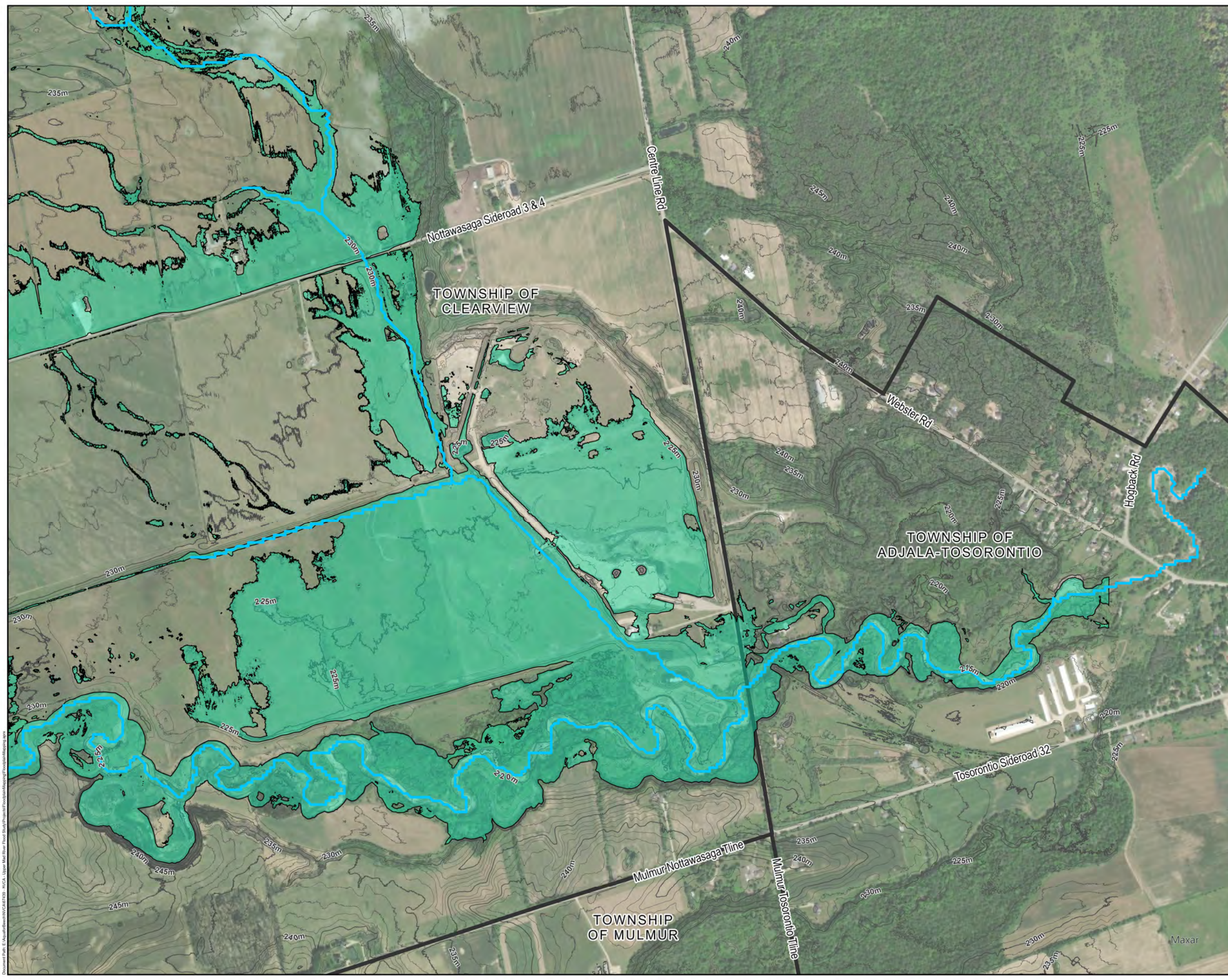
Date: 2024-02-13  
Projection: NAD83(CSRS) UTM Zone 17N  
Data Source: NVCA, LIO  
Created by: A.V.





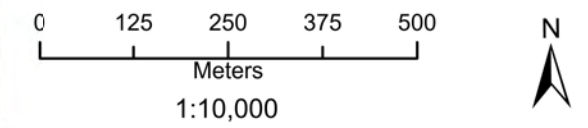
**Legend**

-  Municipal Borders
-  Railway Track
-  Rivers
-  Contours
-  Regional Floodplain (Timmins)



**Regional Floodplain Mapping  
(1 of 5)**

Date: 2024-02-13  
 Projection: NAD83(CSRS) UTM Zone 17N  
 Data Source: NVCA, LID  
 Created by: A.V.



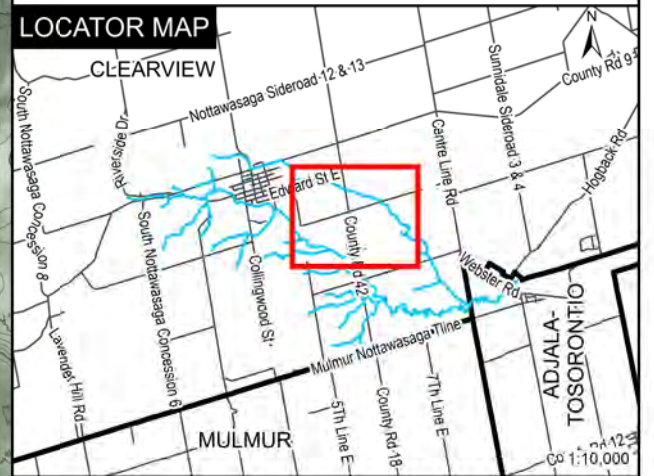
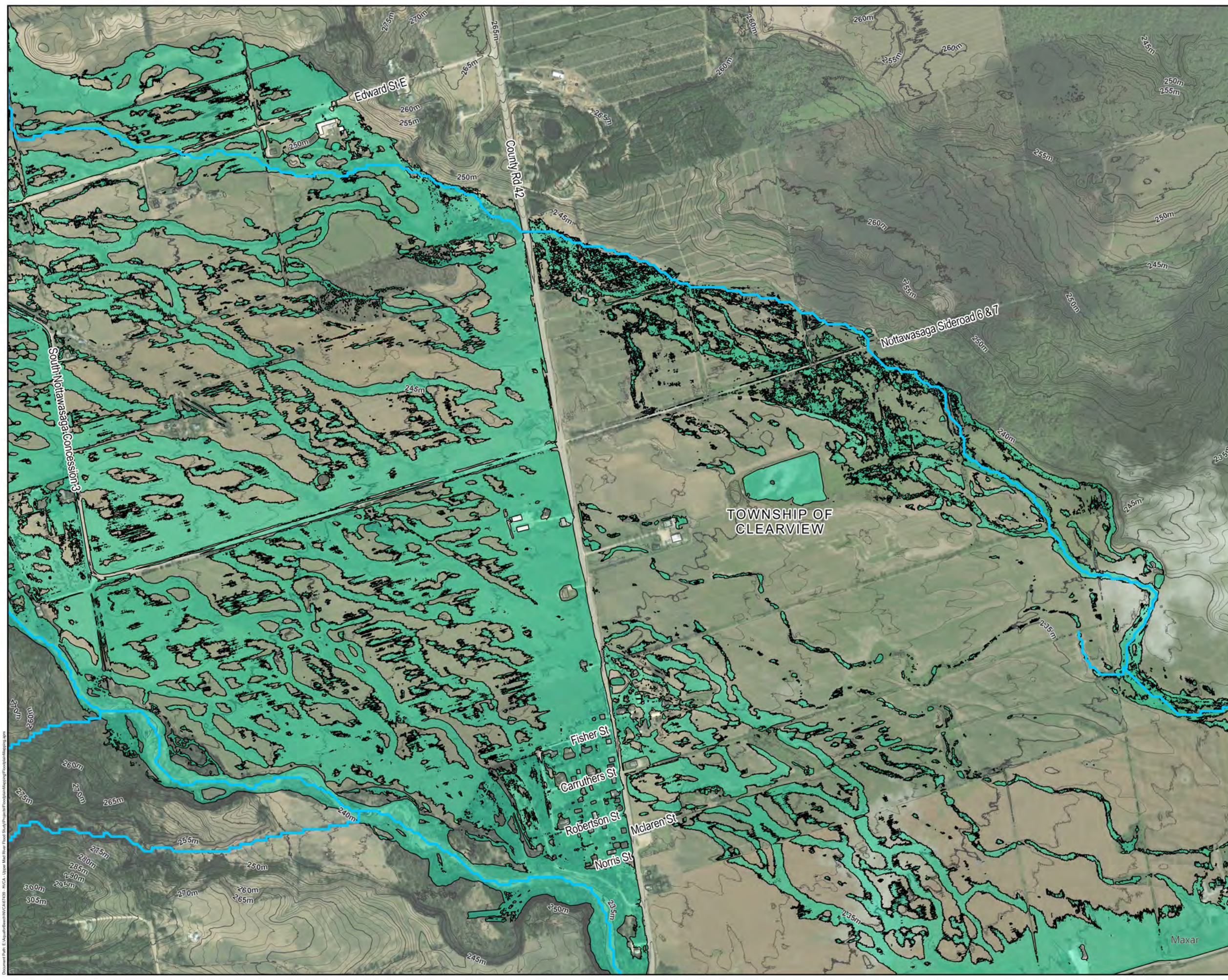
Document Path: E:\AdjalaTosorontio\Projects\GIS\MapDocs\RegionalFloodplainMapping.mxd  
 NVCA, Upper Mer River Flood Study\Project\GIS\MapDocs\RegionalFloodplainMapping.mxd





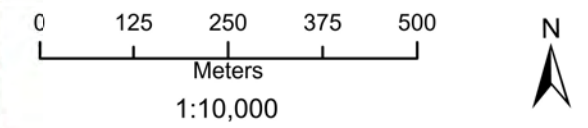
**Legend**

- Municipal Borders
- Railway Track
- Rivers
- Contours
- Regional Floodplain (Timmins)



**Regional Floodplain Mapping  
(3 of 5)**

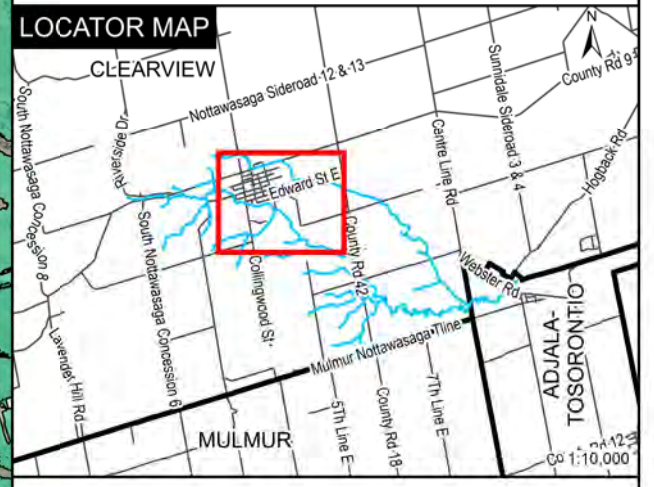
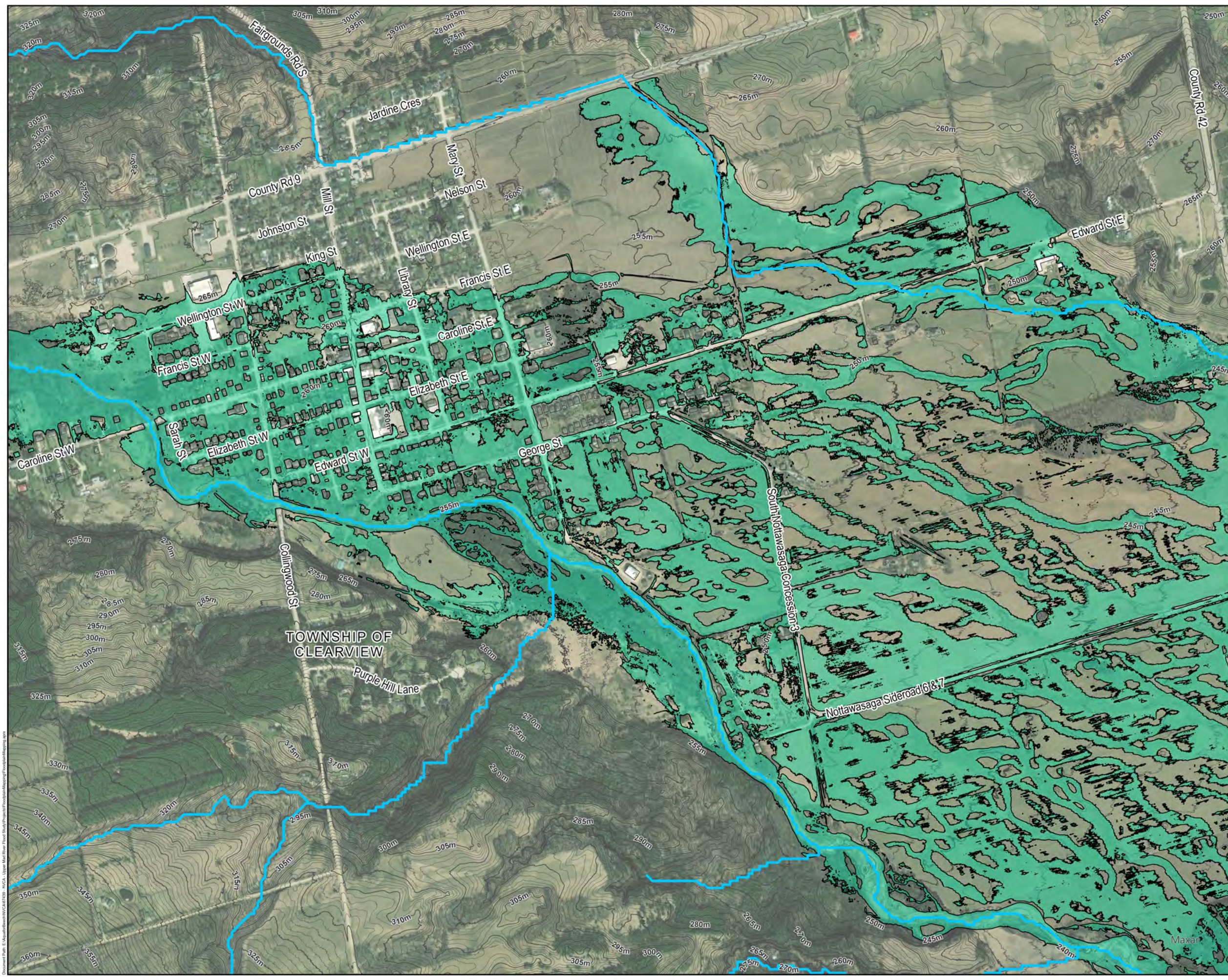
Date: 2024-02-13  
 Projection: NAD83(CSRS) UTM Zone 17N  
 Data Source: NVCA, LIO  
 Created by: A.V.





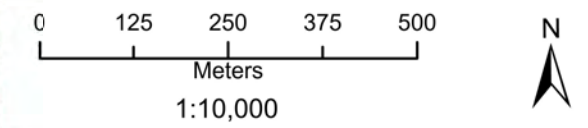
**Legend**

-  Municipal Borders
-  Railway Track
-  Rivers
-  Contours
-  Regional Floodplain (Timmins)



**Regional Floodplain Mapping  
(4 of 5)**

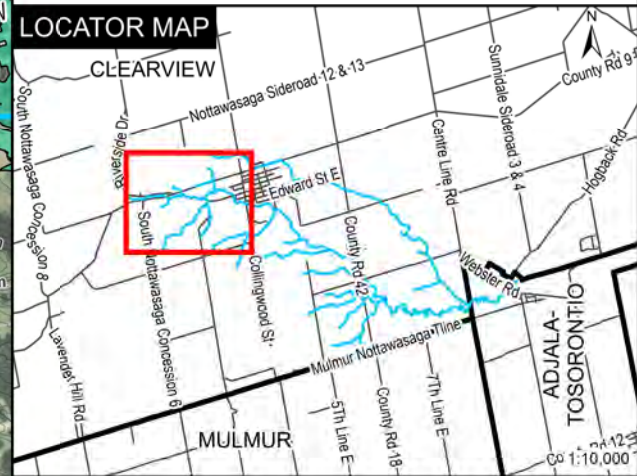
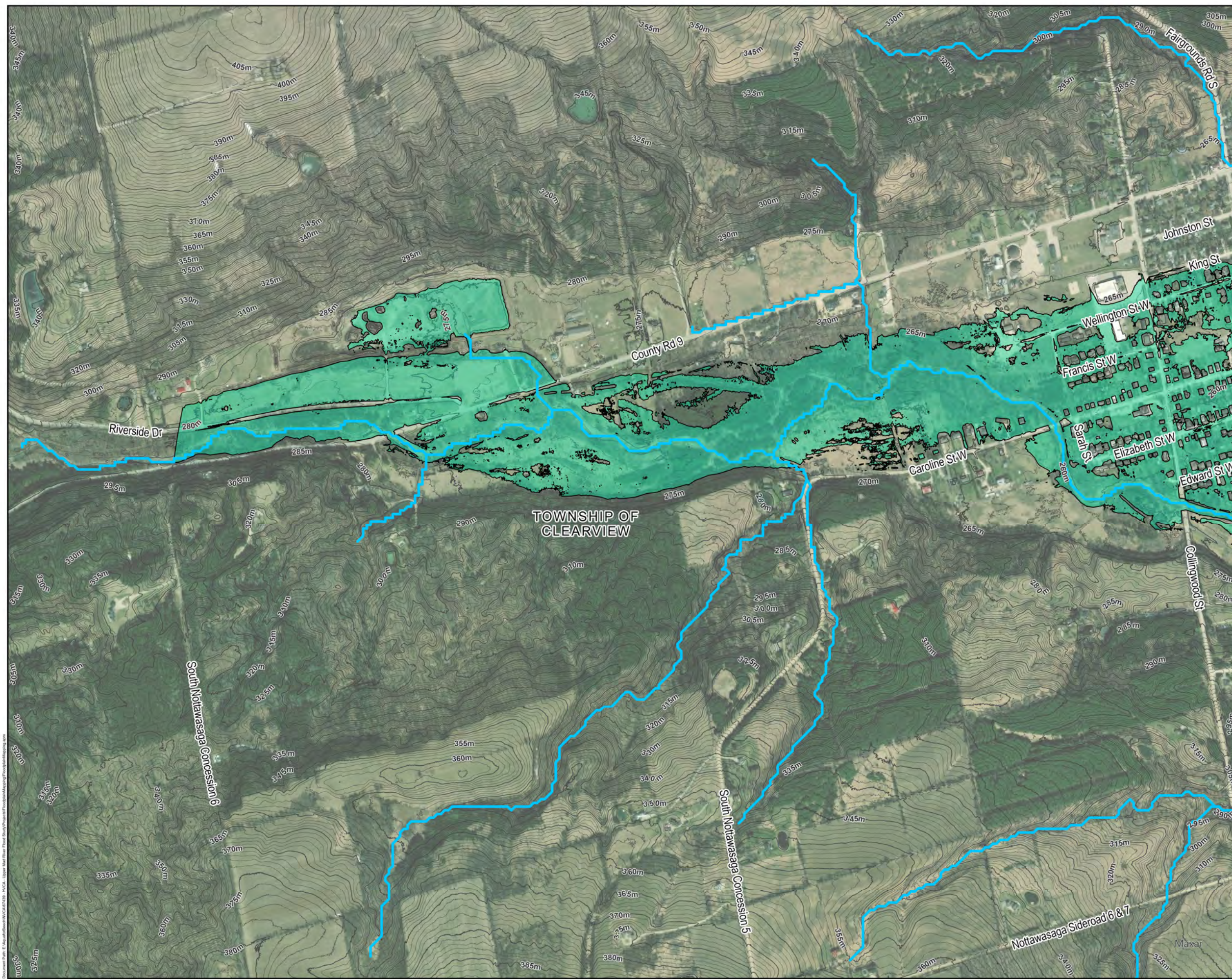
Date: 2024-02-13  
 Projection: NAD83(CSRS) UTM Zone 17N  
 Data Source: NVCA, LIO  
 Created by: A.V.





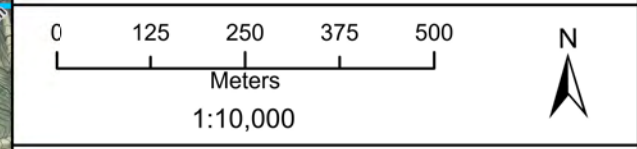
**Legend**

- Municipal Borders
- Railway Track
- Rivers
- Contours
- Regional Floodplain (Timmins)



**Regional Floodplain Mapping  
(5 of 5)**

Date: 2024-02-13  
 Projection: NAD83(CSRS) UTM Zone 17N  
 Data Source: NVCA, LID  
 Created by: A.V.



Document Path: E:\MapInfo\Projects\2024\17N\MapInfo\Projects\Regional Floodplain Mapping\MapInfo\MapInfo.mxd