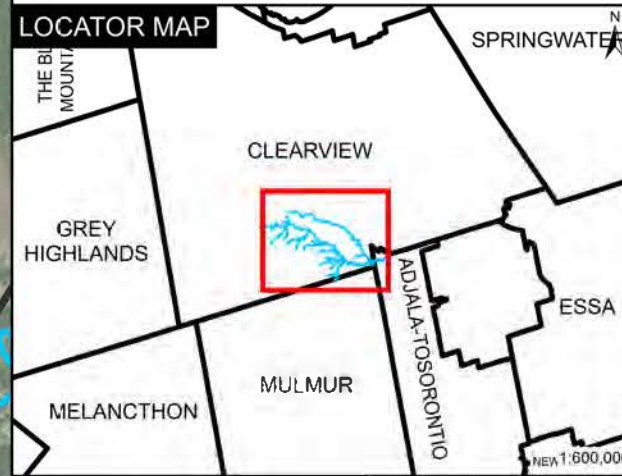
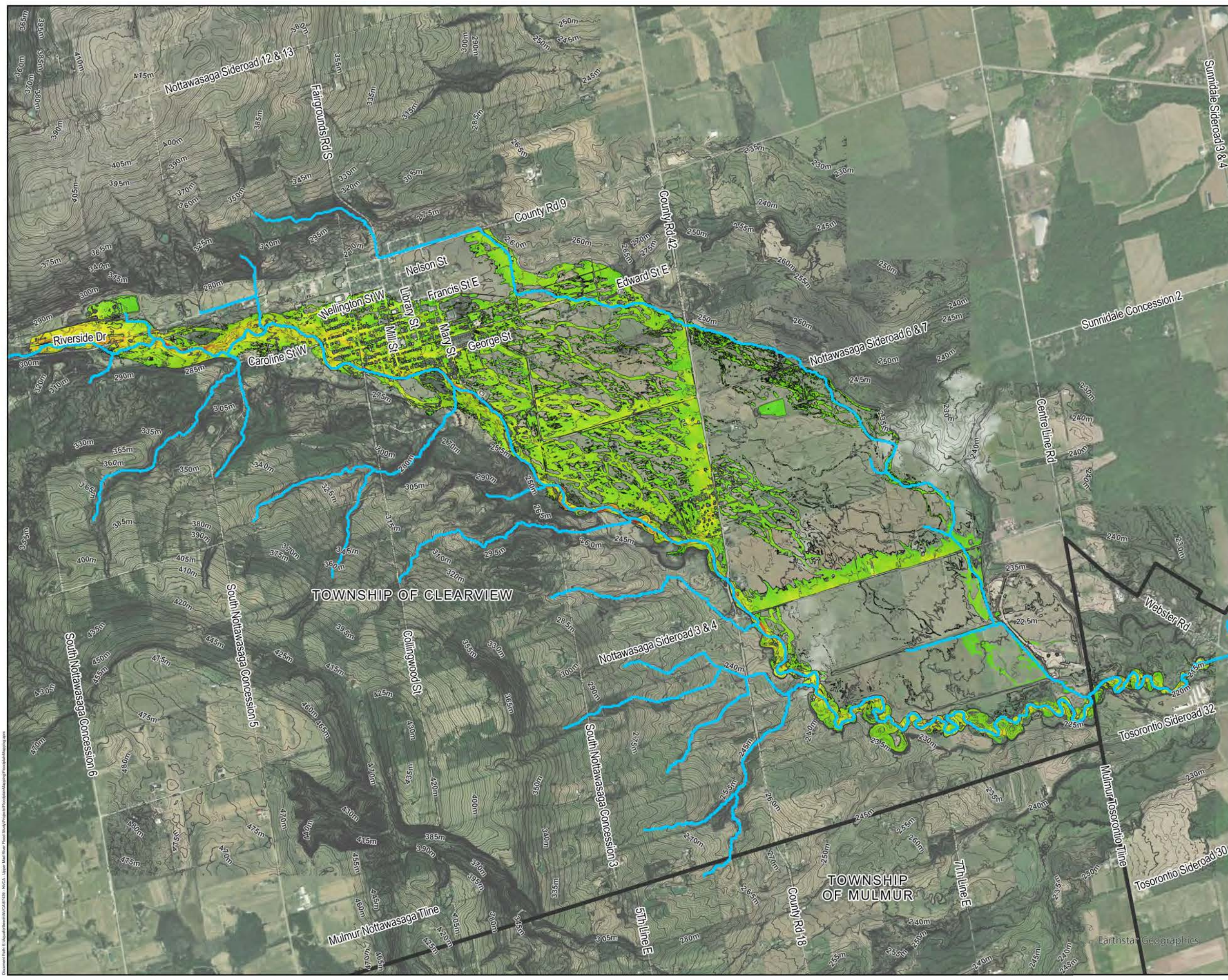
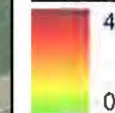




**Legend**

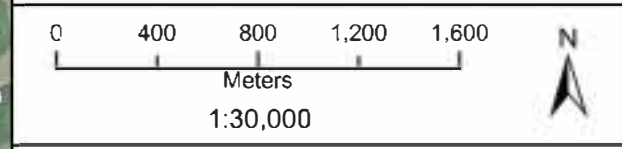
- Municipal Borders
- Railway Track
- Rivers
- Contours

**Velocity (m/s):**



**Regional Floodplain Mapping - Velocity**

Date: 2024-02-13  
 Projection: NAD83(CSRS) UTM Zone 17N  
 Data Source: NVCA, LID  
 Created by: A.V.



Earthstar Geographics



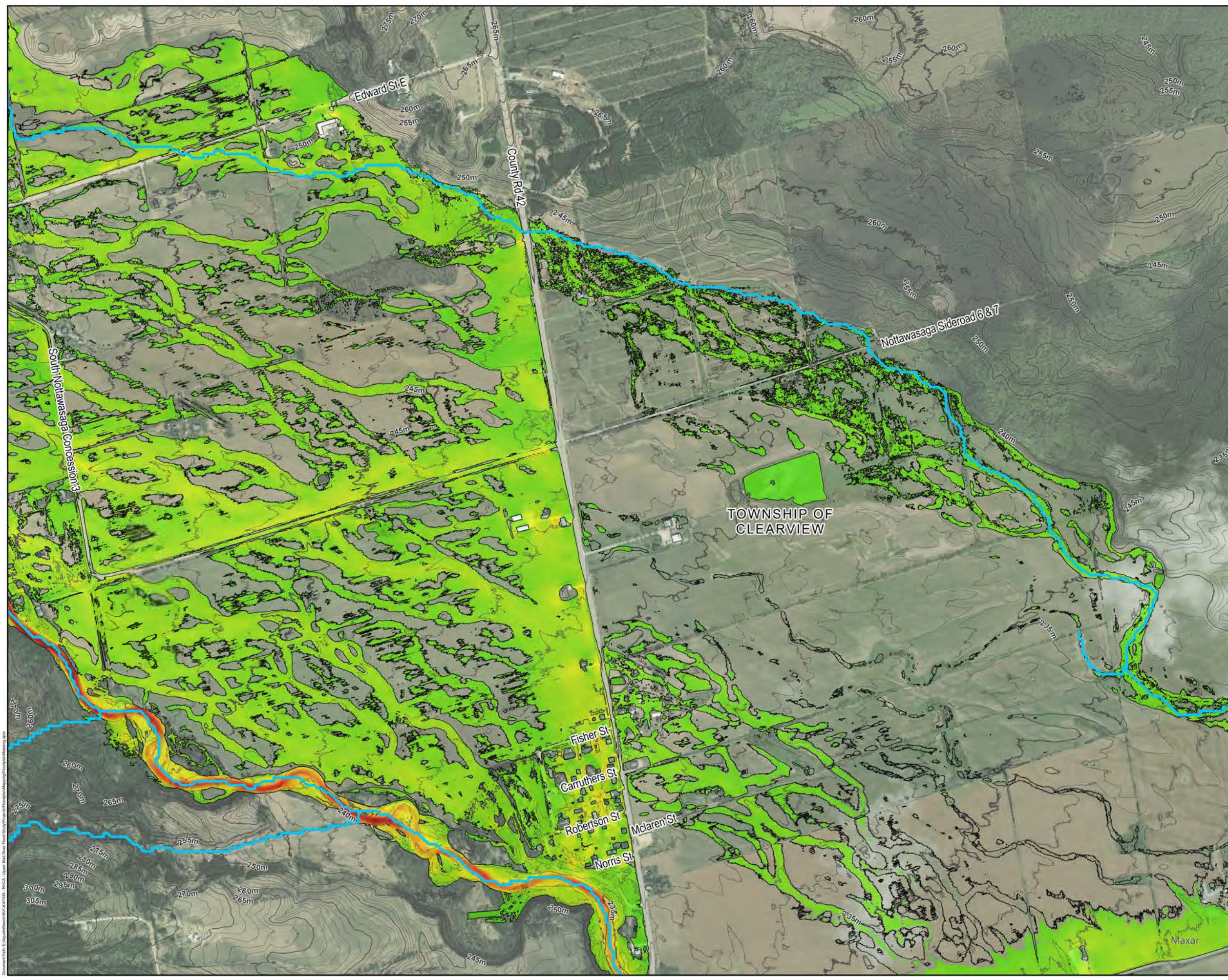
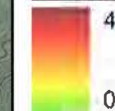




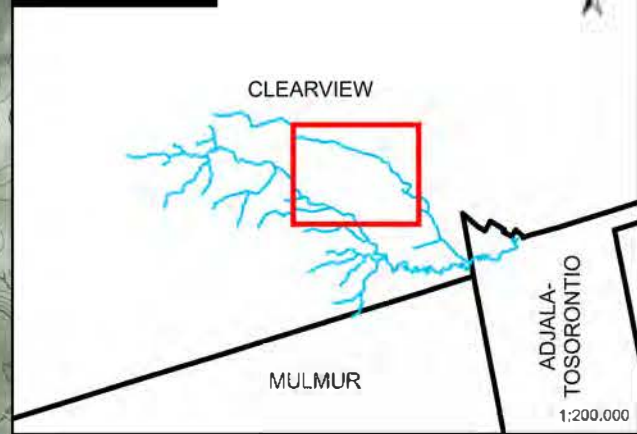
### Legend

- Municipal Borders
- Railway Track
- Rivers
- Contours

### Velocity (m/s):

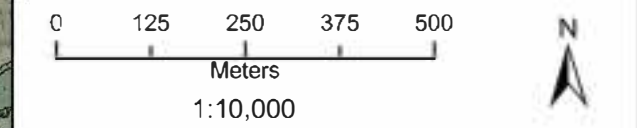


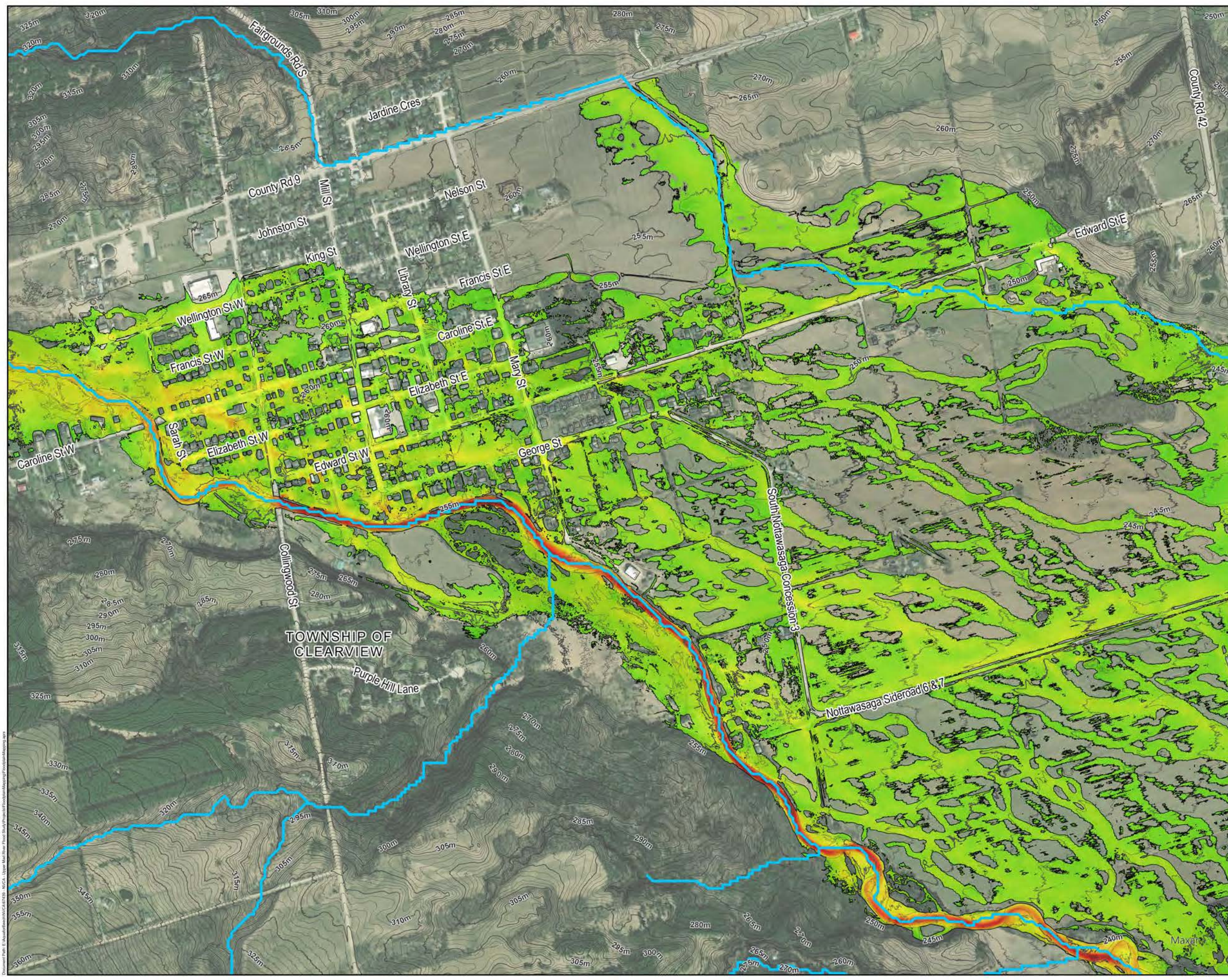
### LOCATOR MAP



### Regional Floodplain Mapping - Velocity (3 of 5)

Date: 2024-02-13  
Projection: NAD83(CSRS) UTM Zone 17N  
Data Source: NVCA, LID  
Created by: A V

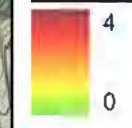




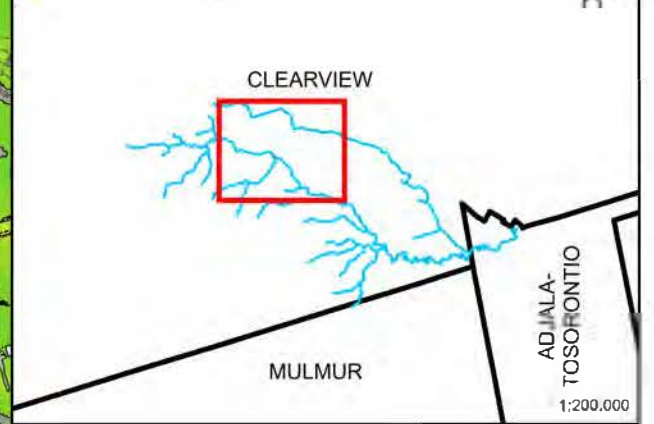
**Legend**

- Municipal Borders
- Railway Track
- Rivers
- Contours

**Velocity (m/s):**

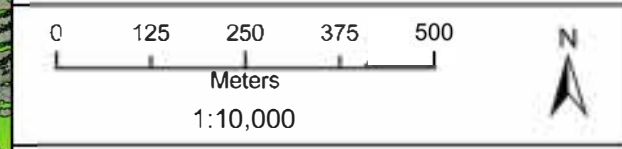


**LOCATOR MAP**



**Regional Floodplain Mapping - Velocity (4 of 5)**

Date: 2024-02-13  
Projection: NAD83(CSRS) UTM Zone 17N  
Data Source: NVCA, LID  
Created by: A V

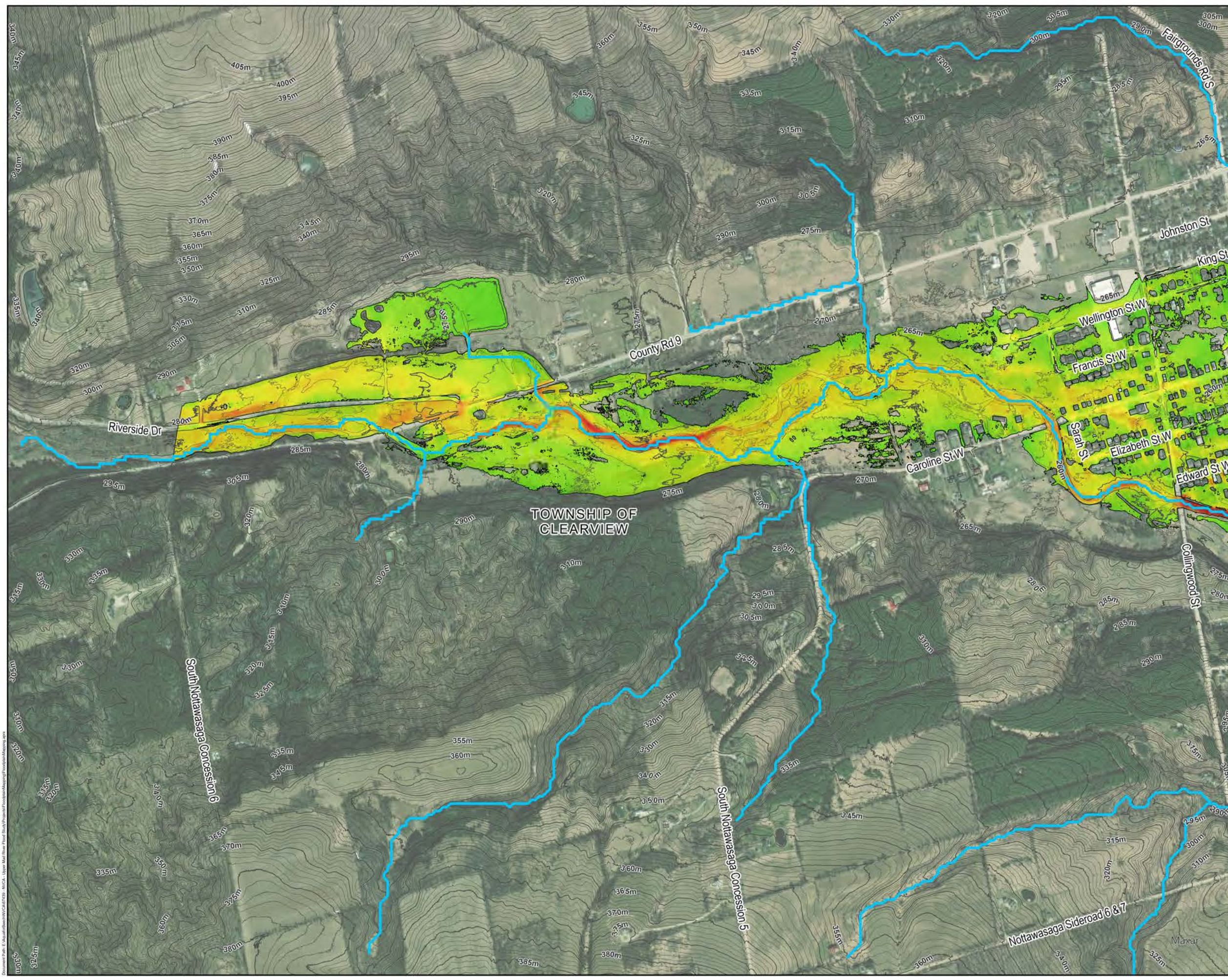
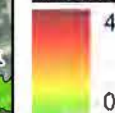




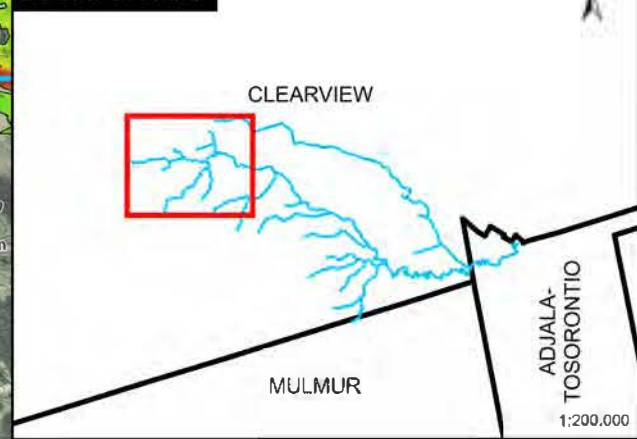
**Legend**

- Municipal Borders
- Railway Track
- Rivers
- Contours

**Velocity (m/s):**



**LOCATOR MAP**



**Regional Floodplain Mapping - Velocity (5 of 5)**

Date: 2024-02-13  
 Projection: NAD83(CSRS) UTM Zone 17N  
 Data Source: NVCA, LID  
 Created by: A.V.

